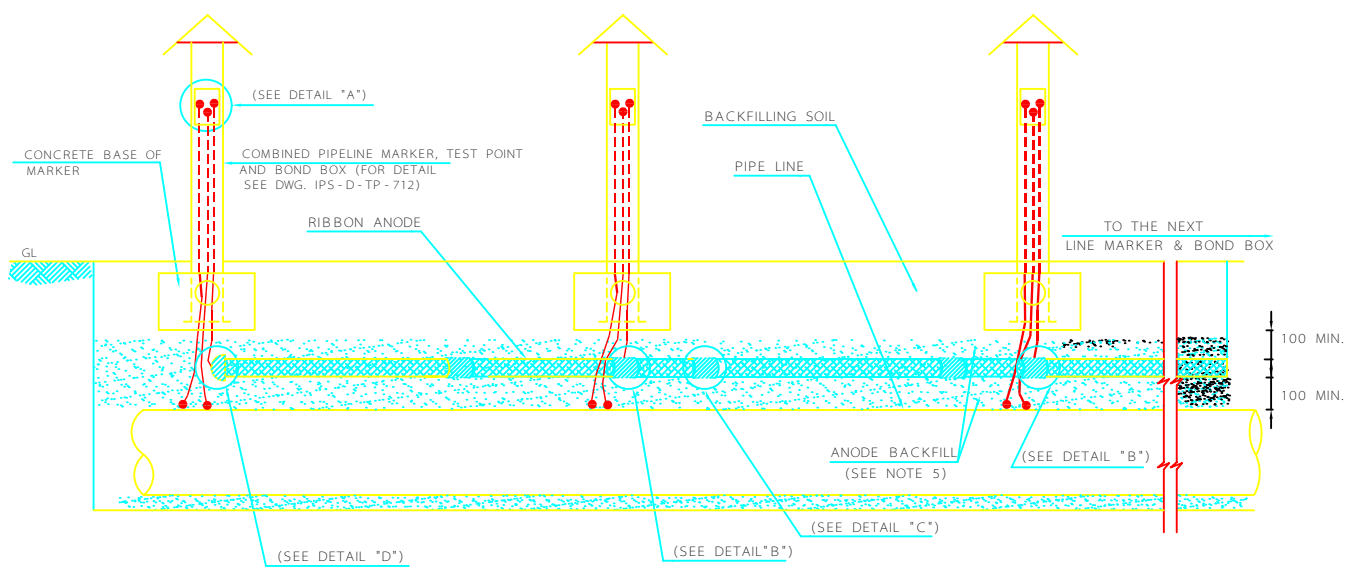


TOP VIEW OF PIPELINE DITCH, PIPE AND MAGNESIUM RIBBON



SECTION A-A

NOTES

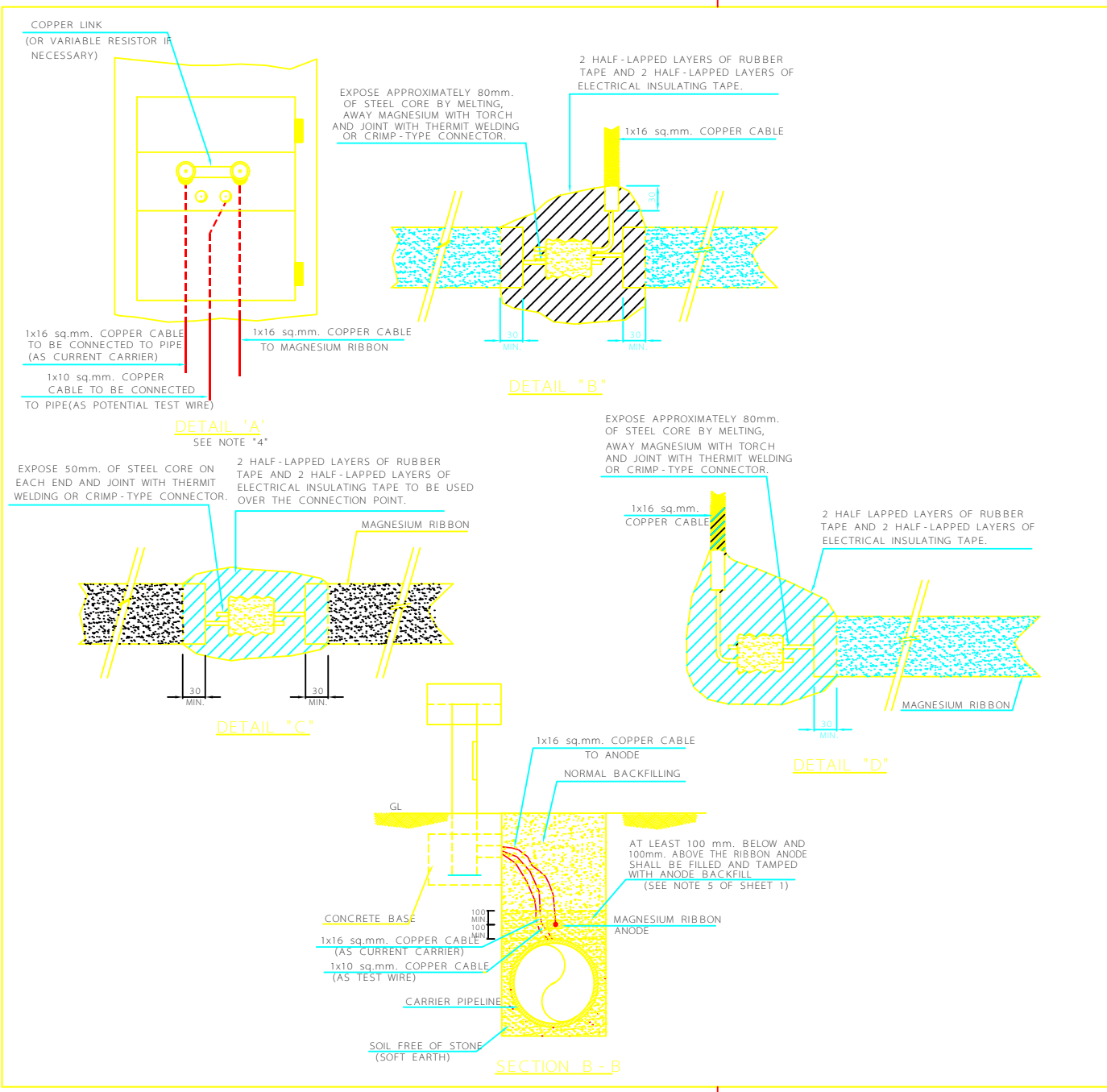
- 1- ALL DIMENSIONS ARE IN mm. UNLESS OTHERWISE NOTED.
- 2- THE PARTICULAR CHARACTERISTICS OF INSTALLATION ARE INDICATED ON THE LOCATION DRAWINGS.
- 3- THE RIBBON ANODE AND PIPELINE INSTALLATION SHALL BE CARRY OUT CONCURRENTLY.
- 4- THE CABLE ENDS SHALL BE SYSTEMATICALLY TAGGED. THE TAG SHALL BE CRIMPED FOR IDENTIFICATION COLOR CODE OF THE CABLES.
- 5- THE ANODE BACKFILL SHALL CONSIST OF 75% BENTONITE, 20% HYDRATED GYPSUM AND 5% SODIUM SULFATE.

C		
B		
A		
REV	DESCRIPTION	DATE

IRANIAN PETROLEUM STANDARDS 

NO REVISION PERMITTED UNLESS APPROVED BY STANDARD ORGANIZATION

CATHODIC PROTECTION SYSTEM INSTALLATION DETAILS OF MAGNESIUM RIBBON ANODE			
DATE	DRAWING No.	SHEET	REV.
	IPS - D - TP - 714	1 / 2	



NOTES

C		
B		
A		
REV	DESCRIPTION	DATE

IRANIAN PETROLEUM STANDARDS
NO REVISION PERMITTED UNLESS APPROVED BY STANDARD ORGANIZATION

CATHODIC PROTECTION SYSTEM INSTALLATION DETAILS OF MAGNESIUM RIBBON ANODE

DATE	DRAWING No.	SHEET	REV.
	IPS - D - TP - 714	2	2