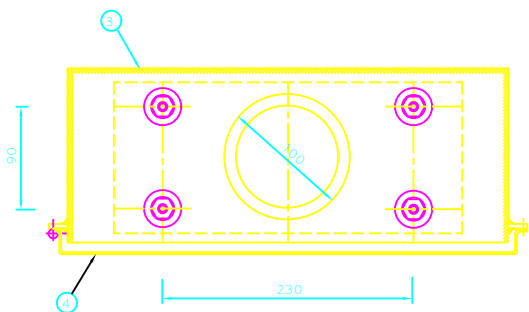
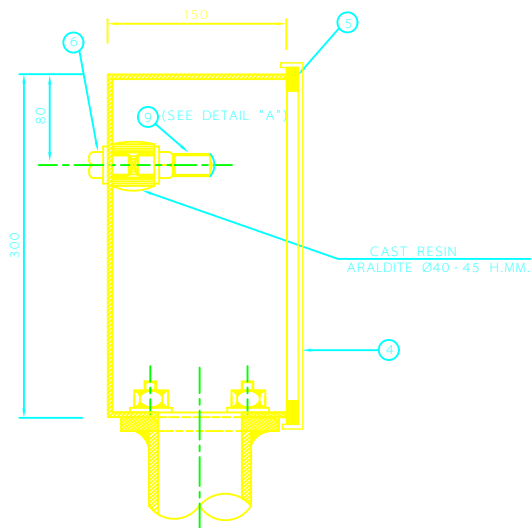


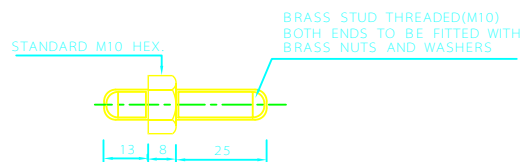
ELEVATION - COVER REMOVED



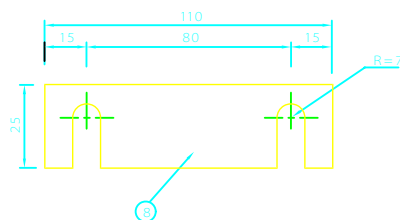
SECTION Y - Y



SECTION X - X



DETAIL "A" THREADED STUD



DETAIL "B" LINK

## NOTES

- 1- ALL DIMENSIONS ARE IN MILLIMETERS UNLESS OTHERWISE SPECIFIED.
- 2- ALL BOLTS, NUTS AND WASHERS SHALL BE GALVANIZED
- 3- AFTER ASSEMBLY OF TEST BOX TO MOUNTING PIPE & PRIOR TO INSTALLATION, ALL STEEL PARTS SHALL BE PAINTED WITH FOLLOWING PROCEDURE:
  - A) SURFACE PREPARATION TO Sa2 1/2.
  - B) ONE RED LEAD PRIMER (70MICRONS). TO IPS - M - TP - 115
  - C) ONE INTERMEDIATE COAT OF ALKYD PAINT (100 MICRONS AT LEAST) TO IPS - M - TP - 130
  - D) ONE FINISHING COAT OF ALKYD GLOSSY YELLOW COLOR PAINT (100 MICRONS) TO IPS - M - TP - 130; COLOR TO BS 381C, NO.309. (TOTAL THICKNESS OF PAINTING 270 MICRONS AT LEAST).
- 4- ALTERNATIVE INTERNAL FITTINGS MAY BE SUPPLIED SUBJECT TO APPROVAL.
- 5- THE PIPE SUPPORT SHALL NOT BE SUPPLIED BY THE BOXES' MANUFACTURER.
- 6- THIS TEST BOX IS TO BE USED MAINLY AS A NEGATIVE AND POSITIVE BOND BOX AND FOR ELECTRICAL CONNECTION OF TWO OR MORE PIPELINES.

ITEM	MATERIALS	QTY.	SPECIFICATION
1	PIPE SUPPORT DN100(4")	1	STEEL PIPE (API 5L)
2	BOTTOM PLATE 300x130x5mm.	1	MILD STEEL
3	BOX	1	MILD STEEL 3mm. THK.
4	COVER	1	MILD STEEL 3mm. THK.
5	NEOPRENE GASKET	1	
6	BOLT WITH WASHER (M10x30)	4	
7	BOLT WITH WASHERS & NUT (M8x30)	4	
8	COPPER LINK	2	110x25x3mm.
9	THREADED STUD M10	4	BRASS
10	INSULATOR		

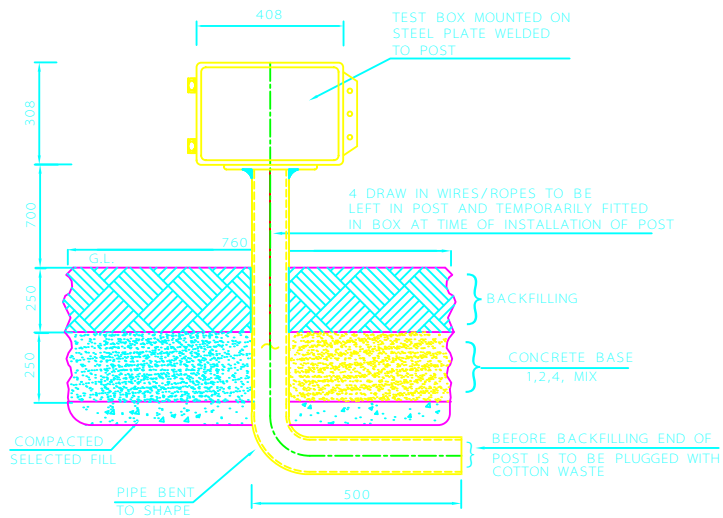
A	DESCRIPTION	DATE
REV		

IRANIAN PETROLEUM STANDARDS 

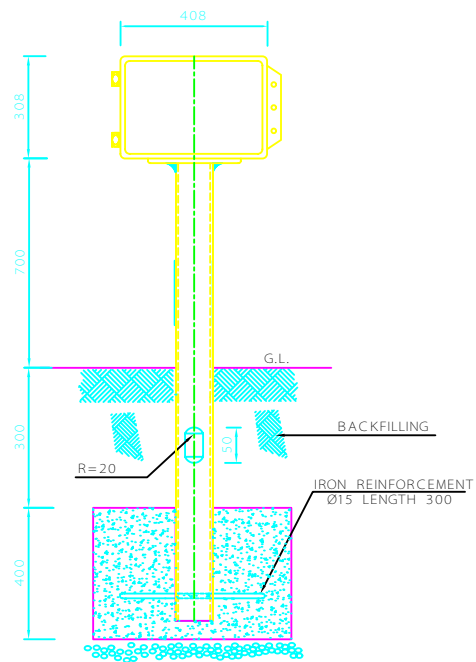
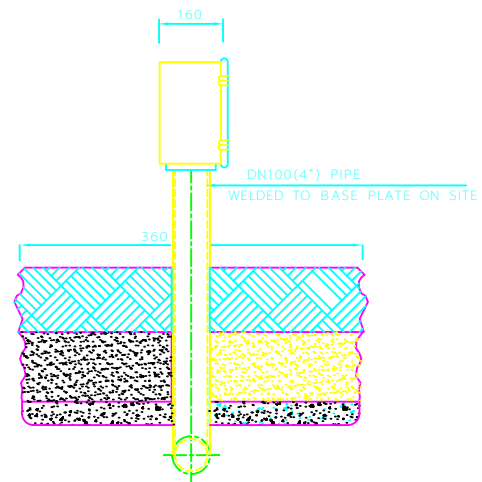
NO REVISION PERMITTED UNLESS APPROVED BY STANDARD ORGANIZATION

CATHODIC PROTECTION SYSTEM  
TEST BOX (TYPE 1)  
DETAILS AND INSTALLATION

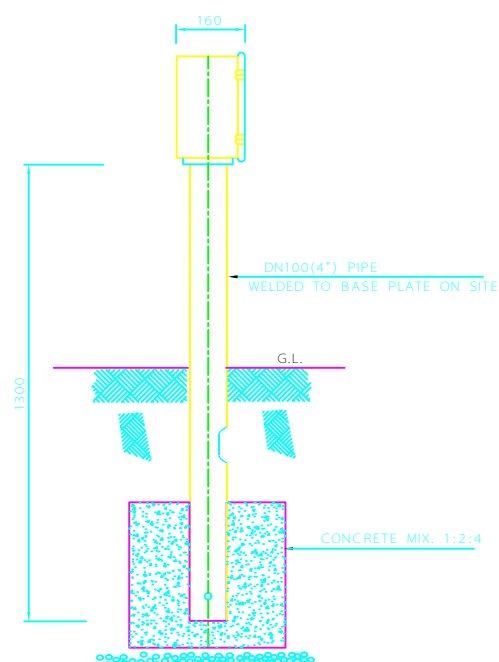
DATE	DRAWING No.	SHEET	REV.
	IPS - D - TP - 704	1 / 4	



INSTALLATION DETAILS OF BOX TYPE TEST POINT




INSTALLATION DETAILS OF NEGATIVE & POSITIVE BOND BOX



## NOTES

- 1- CABLE IDENTIFICATION TAGS ARE TO BE FITTED TO CABLES BEFORE CRIMPLING ON LUG.
- 2- BRASS PADLOCK FOR BOX IS TO BE IDENTICAL TO THE PADLOCK USED ON TRANSFORMER RECTIFIER.
- 3- ALL BURIED PARTS SHALL BE COATED WITH MASTIC (3mm.) TO IPS-M-TP-105.

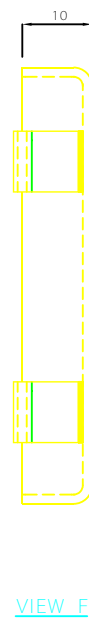
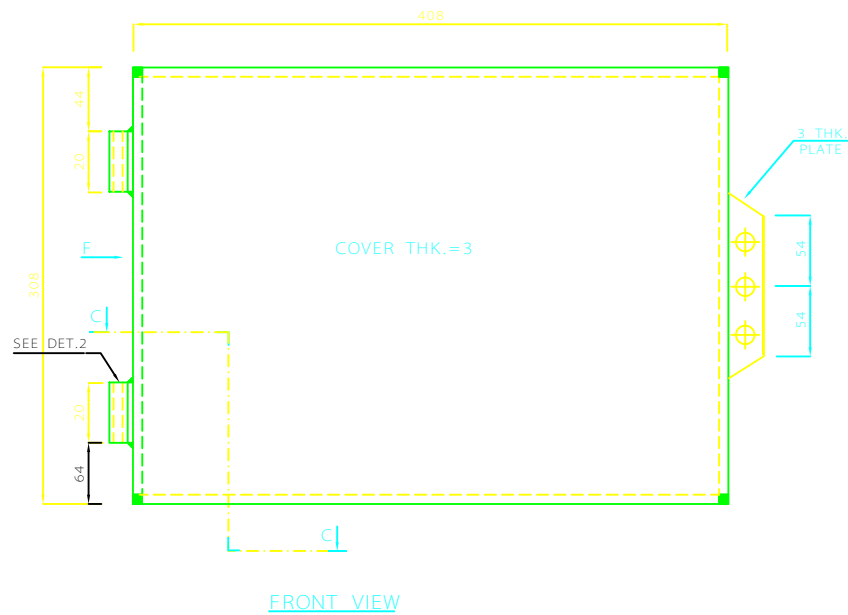
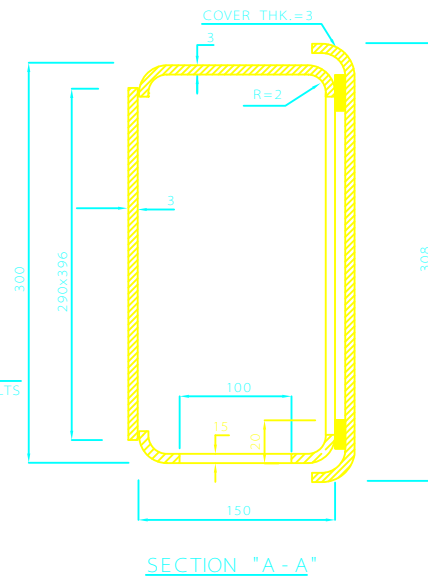
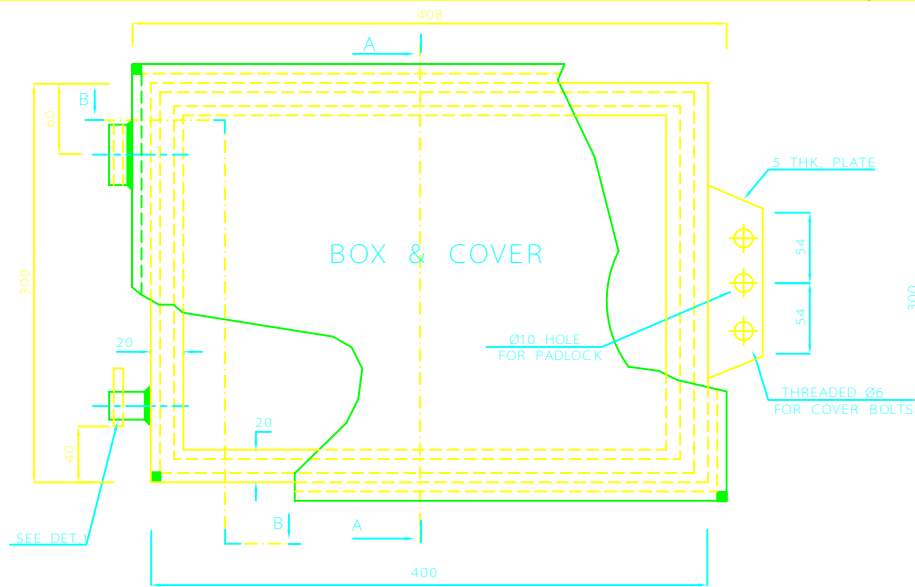
REV	DESCRIPTION	DATE
A		

IRANIAN PETROLEUM STANDARDS 

NO REVISION PERMITTED UNLESS APPROVED BY STANDARD ORGANIZATION

CATHODIC PROTECTION SYSTEM  
TEST BOX (TYPE 1)  
DETAILS AND INSTALLATION

DATE	DRAWING No.	SHEET	REV.
	IPS - D - TP - 704	2/4	



## NOTES

1- ALL DIMENSIONS ARE IN MILLIMETERS UNLESS OTHERWISE SPECIFIED.

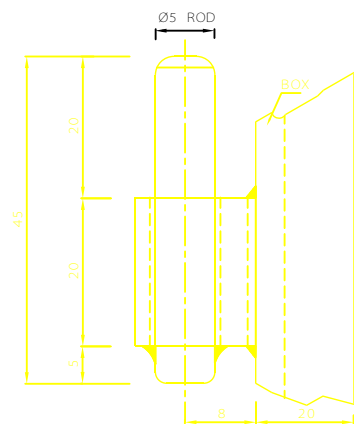
REV	DESCRIPTION	DATE
A		

IRANIAN PETROLEUM STANDARDS

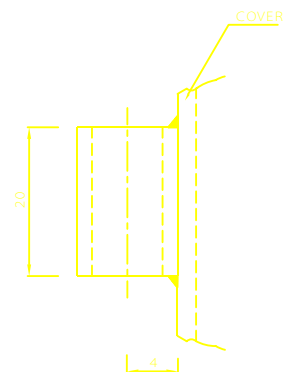
NO REVISION PERMITTED UNLESS APPROVED BY STANDARD ORGANIZATION

CATHODIC PROTECTION SYSTEM  
TEST BOX (TYPE 1)  
DETAILS AND INSTALLATION

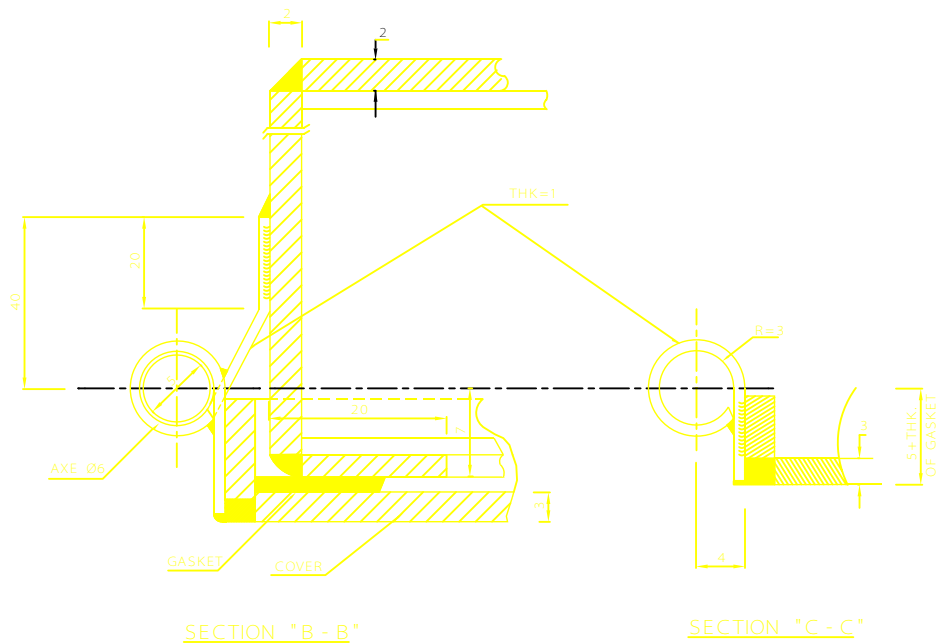
DATE	DRAWING No.	SHEET	REV.
	IPS - D - TP - 704	3/4	



DETAIL "1"



DETAIL "2"




SECTION "B - B"

SECTION "C - C"

NOTES

REV	DESCRIPTION	DATE
A		

IRANIAN PETROLEUM STANDARDS 

NO REVISION PERMITTED UNLESS APPROVED BY STANDARD ORGANIZATION

CATHODIC PROTECTION SYSTEM  
TEST BOX (TYPE 1)  
DETAILS AND INSTALLATION

DATE	DRAWING No.	SHEET	REV.
	IPS - D - TP - 704	4	4