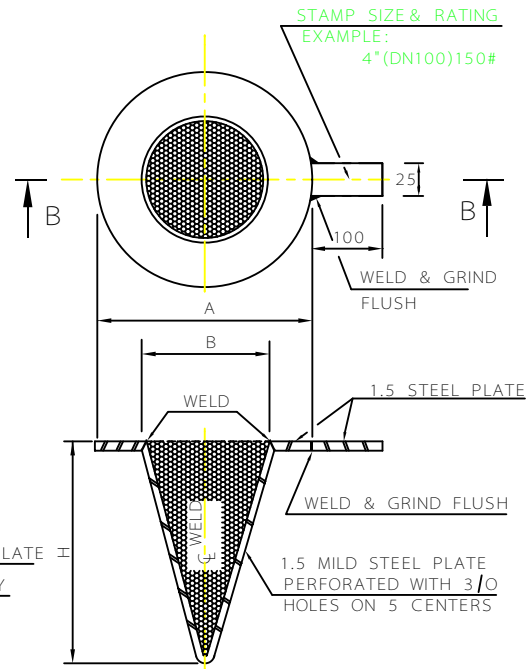
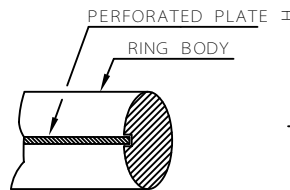


SECTION "A - A"
CL. 600# RJ

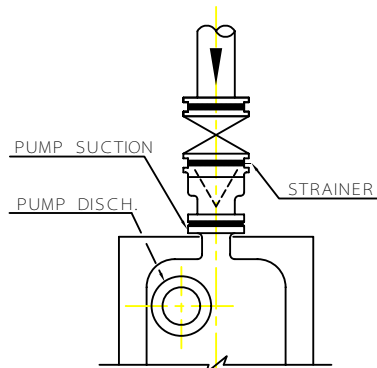


SECTION "B - B"
150#,300# & 600# RF



DETAIL "A"

SIZE		A		B		H				
NPS	DN	600#			RATIO FACTOR					
					0.75	1.0	1.25	1.50	1.75	
2"	50	71	43	62	85	108	130	153		
3"	80	112	67	96	137	165	199	234		
4"	100	138	91	127	177	219	265	311		
6"	150	200	140	195	267	338	408	478		
8"	200	258	187	257	357	446	538	631		
10"	250	312	237	325	445	564	681	798		
12"	300	370	283	384	533	675	816	957		
14"	350	408	311	428	587	744	898	1053		
16"	400	458	357	490	673	851	1028	1205		



INSTALLATION DETAIL
STRAINER LOCATION (IN LARGE PORTION OF LINE BETWEEN VALVE AND PUMP)

SIZE		A		B		H				
NPS	DN	150#	300#	600#		RATIO FACTOR				
						0.75	1.0	1.25	1.50	1.75
2"	50	102	108	108	43	62	85	108	130	153
2 1/2"	65	121	127	127	53	75	103	131	158	185
3"	80	133	146	146	67	96	125	165	199	234
4"	100	171	178	191	91	127	177	219	265	311
6"	150	219	248	263	140	195	267	338	408	478
8"	200	276	305	317	187	257	357	446	538	631
10"	250	337	359	397	237	325	445	564	681	798
12"	300	406	419	454	283	384	533	675	816	957
14"	350	448	483	489	311	428	587	744	898	1053
16"	400	511	537	562	357	490	673	851	1028	1205

NOTES

- 1 - ALL THICKNESS VALUES & DIMENSIONS ARE IN mm.
- 2 - THE CONTACT FACE SHALL BE FREE OF BURRS, IRREGULARITIES, ETC.
- 3 - CHART TO BE RECHECKED AFTER SELECTION OF VENDOR.
- 4 - DIMENSIONS "B" & "H" ARE BASED ON SCH.80 PIPE. FOR PIPES HEAVIER THAN SCH.80 THESE DIM.S SHALL BE CALCULATED ACC. TO JOB REQUIREMENTS.
- 5 - RATIO FACTOR=

$$= \frac{\text{OPEN AREA IN PERFORATED METAL}}{\text{INTERNAL AREA OF SCH.40 PIPE}}$$
- 6 - DIM. ENCOMPASSED WITHIN A SQUARE ARE STD. RECOMMENDATIONS, OTHER DIM. FOR OTHER RATIO FACTORS ARE TO BE USED ONLY WITH APPROVAL.

THIS DWG. SUPERSEDES DWG. No.B-0-5012

REV	DESCRIPTION	DATE
3		
2		
1		

IRANIAN PETROLEUM STANDARDS
NO REVISION PERMITTED UNLESS APPROVED BY STANDARD ORGANIZATION

CONICAL TYPE SUCTION STRAINER

DATE	DRAWING No.	SHEET	REV.
	IPS - D - PI - 117	1	1