

FIGURE 1 - STRAINER HOUSING
(SEE NOTE "2")

BASKET SUPPORT AND GUIDE ROD DIMENSIONS TABLE														
FLANGE SIZE	NPS	2"	2 1/2"	3"	4"	6"	8"	10"	12"	14"	16"	18"	20"	24"
	DN	50	65	80	100	150	200	250	300	350	400	450	500	600
ROD DIA.		6	6	6	6	10	10	10	13	13	13	13	13	13
MAX. TOTAL SUPPORT & GUIDE ROD LENGTH		950	950	950	1200	1650	2000	2200	2900	2300	2500	2700	3050	3450

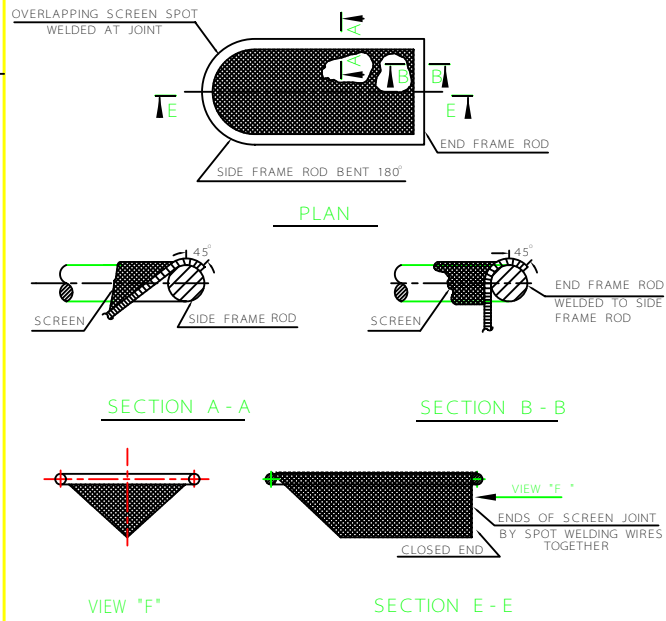


FIGURE 3 - STRAINER BASKET
(SEE NOTE "4")

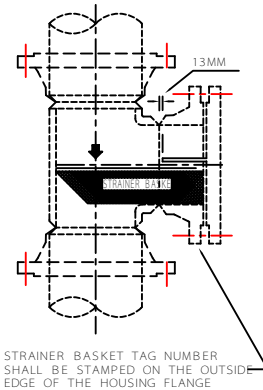
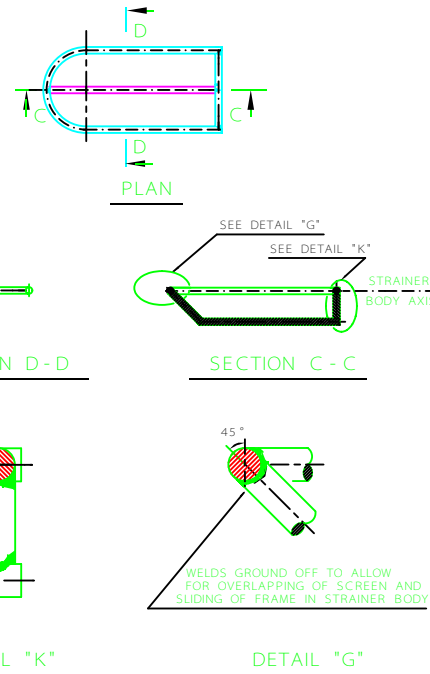


FIGURE 2 - STRAINER BASKET IN HOUSING
(SEE NOTE "3")



SUPPORT FRAME OF
SCREEN FOR 12"(DN300) & LARGER

NOTES

- 1 - ALL THICKNESS VALUES AND DIMENSIONS ARE IN mm.
- 2 - TEE, WELDING NECK FLANGE, BLIND FLANGE, GASKETS & BOLTS SHALL CONFORM TO THE REQUIREMENTS OF THE PIPE MATERIAL CLASS. THE WALL THICKNESS SCHEDULE OF THE TEE AND OF THE WELDING NECK FLANGE BORE SHALL BE AS SPECIFIED FOR THE PIPE. ROD AND TACK WELD MATERIAL SHALL CONFORM TO THE CHEMICAL COMPOSITION REQUIREMENTS OF THE TEE MATERIAL. SIZE & MAX. LENGTH OF SUPPORT & GUIDE RODS ARE SHOWN IN THE TABLE.
- 3 - STRAINER BASKET SHALL BE TAGGED & FURNISHED SEPARATELY FOR INSTALLATION BY ERECTOR.
- 4 - END & SIDE ROD MATERIAL SHALL BE THE SAME AS THE SCREEN MATERIAL & DIAMETER SHALL BE THE SAME AS THE SUPPORT & GUIDE ROD DIAMETERS.

THIS DWG. SUPERSEDES DWG. No. B - 0 - 5049

REV	DESCRIPTION	DATE
3		
2		
1		

IRANIAN PETROLEUM STANDARDS
NO REVISION PERMITTED UNLESS APPROVED BY STANDARD ORGANIZATION

"T" TYPE SUCTION STRAINER

DATE	DRAWING No.	SHEET	REV.
	IPS - D - PI - 114	1	1