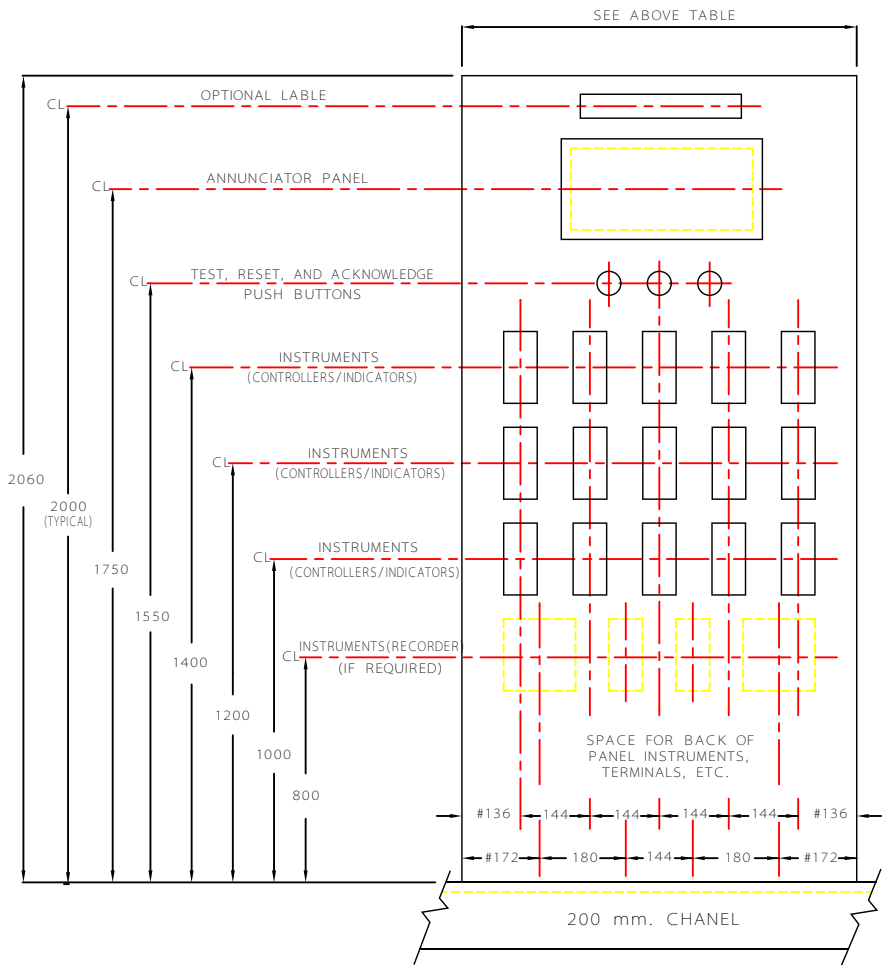


INSTRUMENTATION STANDARD PANELS

C			IRANIAN PETROLEUM STANDARDS 			
B			NO REVISION PERMITTED UNLESS APPROVED BY STANDARD ORGANIZATION			
A			COVERING SHEET	DATE	DRAWING No.	SHT/REV.
REV	DESCRIPTION	DATE			IPS - D - IN - 116	/

No. OF INSTRUMENTS IN EACH ROW	3	5	7	8	10
WIDTH OF PANEL	600	850	1140	1300	1600



C		
B		
A		
REV	DESCRIPTION	DATE

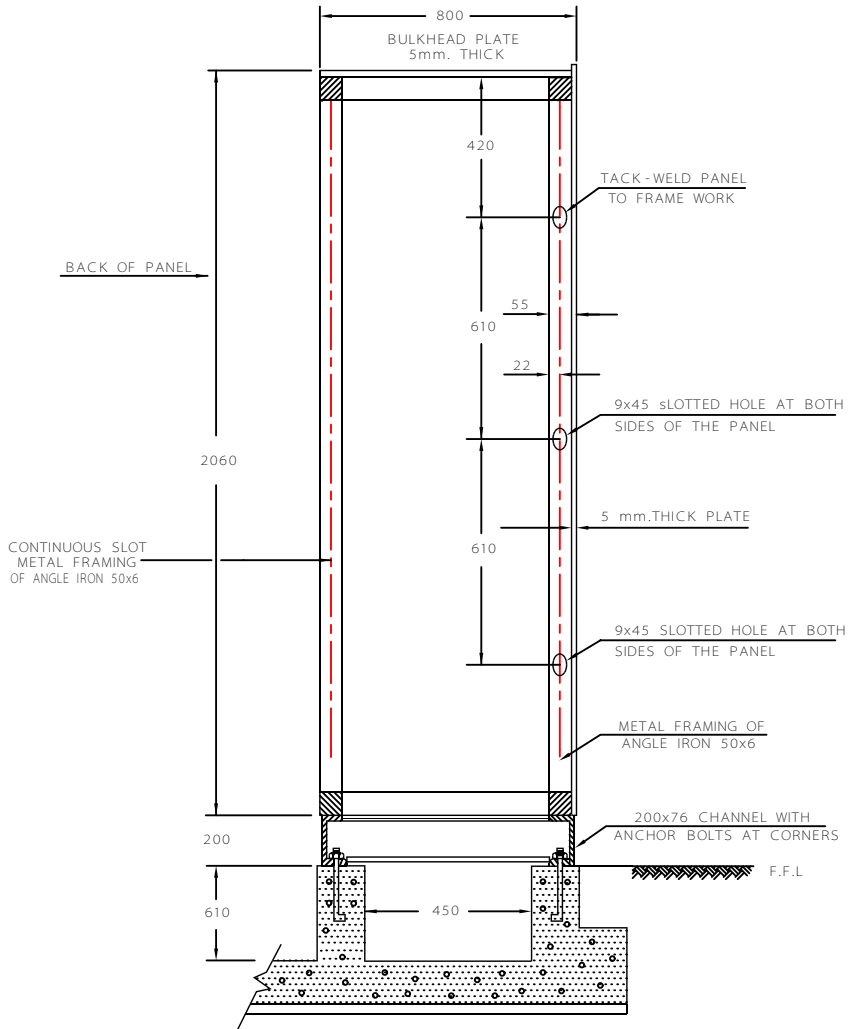
IRANIAN PETROLEUM STANDARDS



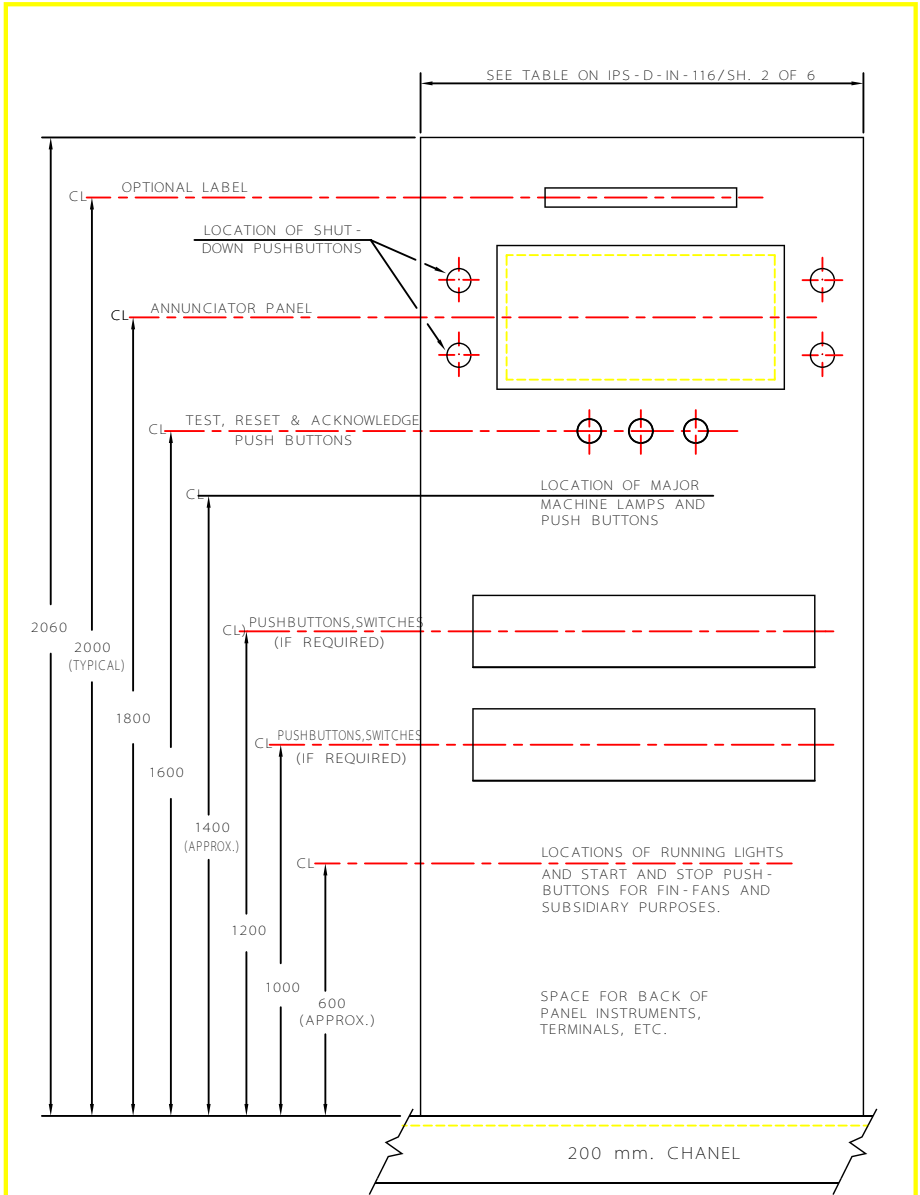
NO REVISION PERMITTED UNLESS APPROVED BY STANDARD ORGANIZATION


STANDARD CONTROL ROOM PANELS

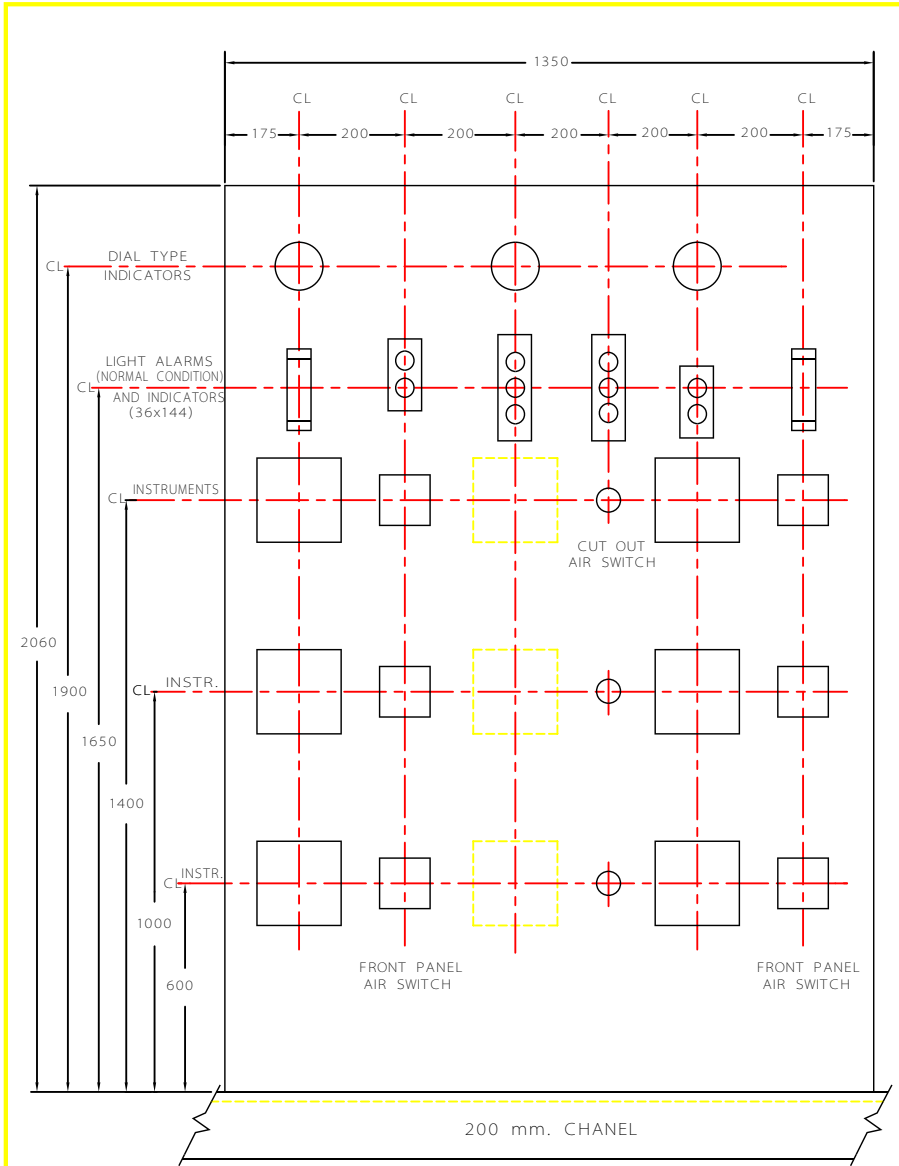
DATE	DRAWING No.	SHT	REV.
	IPS - D - IN - 116	1	4



C			IRANIAN PETROLEUM STANDARDS  NO REVISION PERMITTED UNLESS APPROVED BY STANDARD ORGANIZATION			
B						
A			STANDARD PANEL SECTION AND SUPPORT DETAIL	DATE	DRAWING No.	SHT/REV.
REV	DESCRIPTION	DATE			IPS - D - IN - 116	2/4



C			IRANIAN PETROLEUM STANDARDS  NO REVISION PERMITTED UNLESS APPROVED BY STANDARD ORGANIZATION				
B							
A			APPROXIMATE LOCATION OF	DATE	DRAWING No.	SHT	REV.
REV	DESCRIPTION	DATE	PUSHBUTTONS AND LAMPS		IPS - D - IN - 116	3	4



C			IRANIAN PETROLEUM STANDARDS NO REVISION PERMITTED UNLESS APPROVED BY STANDARD ORGANIZATION
B			
A			
REV	DESCRIPTION	DATE	1350 mm. 2060 mm. TYPICAL ARRANGEMENT FOR INCOMING FLOW LINES.
			DATE _____ DRAWING No. _____ SHT/REV. _____ IPS - D - IN - 116 4/4