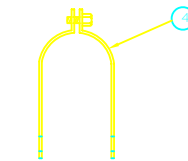
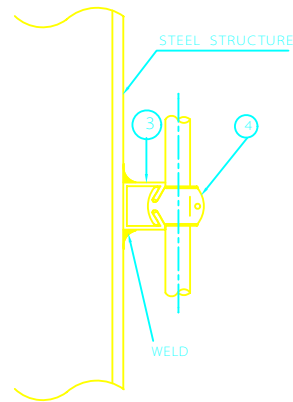


SECTION "A - A"



DETAIL "A"



DETAIL "B"

## NOTES

- 1- MASONRY ANCHOR SHALL BE SUITABLE FOR REINFORCED CONCRETE AND MASONRY BUILDING.
- 2- ALL DIMENSIONS ARE IN MILLIMETERS

No.	DESCRIPTION	QTY.
1	MASONRY ANCHOR	
2	BOLT & NUT WITH 1-SPRING,2-FLAT WASHERS MBx15L FOR MASONRY ANCHOR	
3	UNISTRUT CHANNEL ([40X30X10X2.5tX120L])	
4	UNISTRUT CLAMP WITH BOLT/NUT.	

REV	DESCRIPTION	DATE
C		
B		
A		

IRANIAN PETROLEUM STANDARDS   
 NO REVISION PERMITTED UNLESS APPROVED BY STANDARD ORGANIZATION

REFERENCE DRAWING  
 GROUNDING INSTALLATION DETAILS  
 "CATEGORY 400"  
 CONDUIT SUPPORT

DATE	DRAWING No.	SHEET	REV.
	IPS - D - EL - 415	1	1