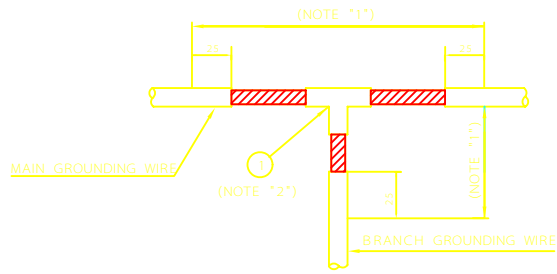
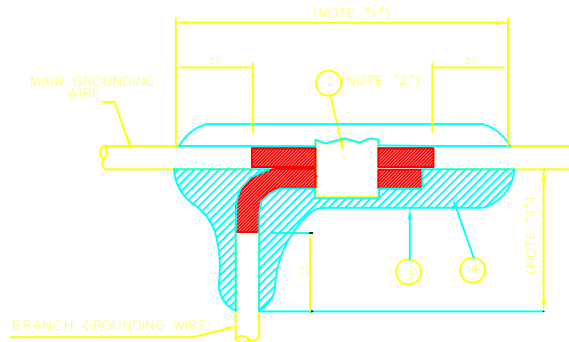


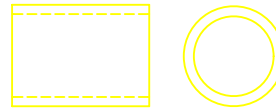
UNDER GROUND



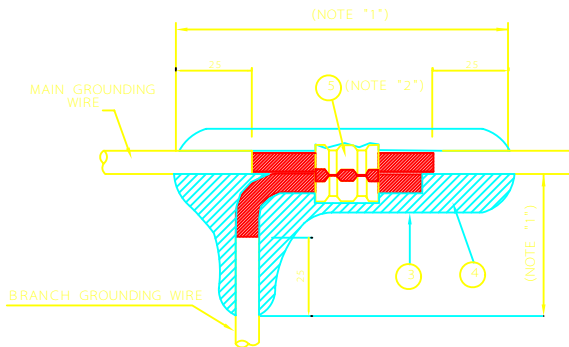
ABOVE GROUND



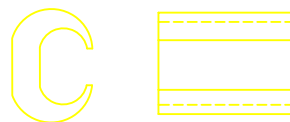
PARALLEL CONNECTOR



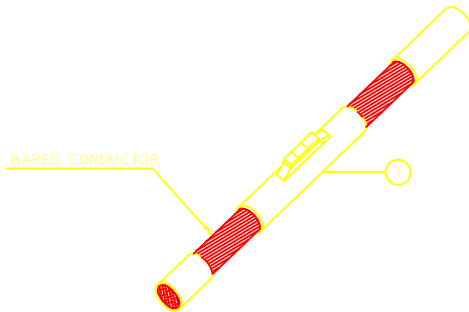
DETAIL OF PARALLEL CONNECTOR



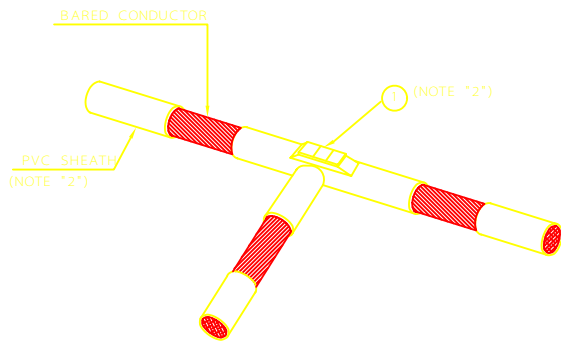
"C" TYPE CONNECTOR



DETAIL OF "C" TYPE" CONNECTOR



STRAIGHT JOINT



TEE BRANCH

NOTES

- 1 - TO BE HALF LAP WRAPPED WITH ADHESIVE PVC TAPE (MIN.THREE LAYERS)
- 2 - THERMO WELDING TOOL AND MATERIALS SHALL BE SUITABLE FOR JOINED CONDUCTOR SIZES.
- 3 - ALL DIMENSIONS ARE IN MILLIMETERS.

No.	DESCRIPTION	QTY.
①	THERMOWELD (CADWELD) TYPE UNDERGROUND BRANCH CONNECTOR	
②	PARALLEL CONNECTOR	
③	PVC TAPE	
④	ADHESIVE PVC INSULATION TAPE	
⑤	"C" TYPE CONNECTOR	

REV	DESCRIPTION	DATE

IRANIAN PETROLEUM STANDARDS 
 NO REVISION PERMITTED UNLESS APPROVED BY STANDARD ORGANIZATION

REFERENCE DRAWING
 GROUNDING INSTALLATION DETAILS
 "CATEGORY 400"
 BRANCH WIRE CONNECTION

DATE	DRAWING No.	SHEET	REV.
	IPS - D - EL - 402	1	1