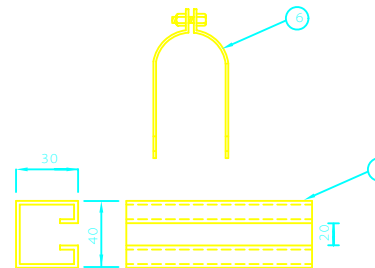
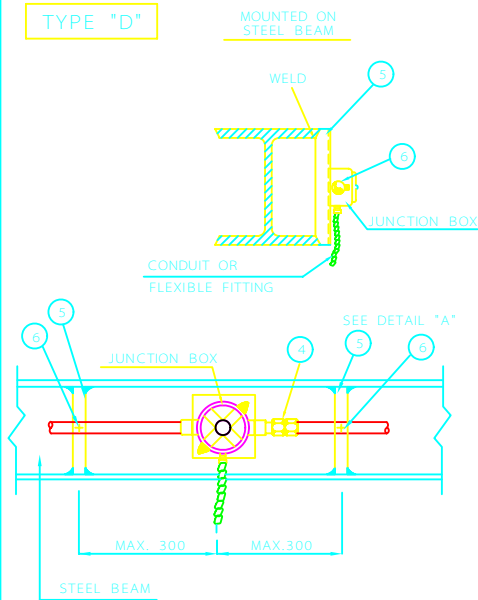
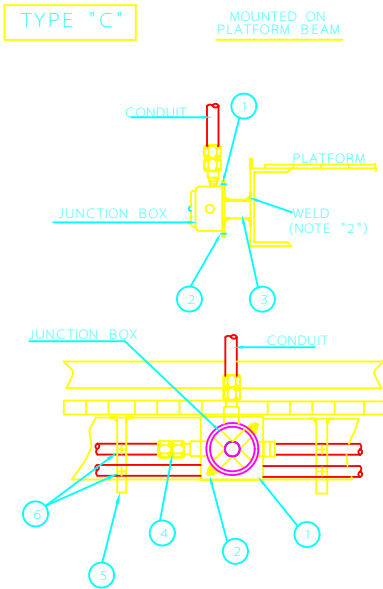


ISOMETRIC VIEW OF UNISTRUT CHANNEL & CLAMP



DETAIL "A"

## NOTES

- 1- FOR JUNCTION BOX LOCATION, TYPE, etc. SEE RELEVANT LIGHTING LAYOUT DRAWINGS.
- 2- TO BE WELDED TO STEEL STRUCTURE AT FIELD OR BOLTED WITH MASONRY ANCHOR.
- 3- ALL DIMENSIONS ARE IN MILLIMETERS.

No.	DESCRIPTION	QTY.
1	MOUNTING PLATE	
2	BOLT AND NUT WITH 1-SPRING WASHER AND 1-FLAT WASHER, FOR JUNCTION BOX	
3	STEEL ANGLE (L - 50x50x6)	
4	UNION COUPLING	
5	UNISTRUT CHANNEL	
6	UNISTRUT CLAMP	

REV	DESCRIPTION	DATE

IRANIAN PETROLEUM STANDARDS 

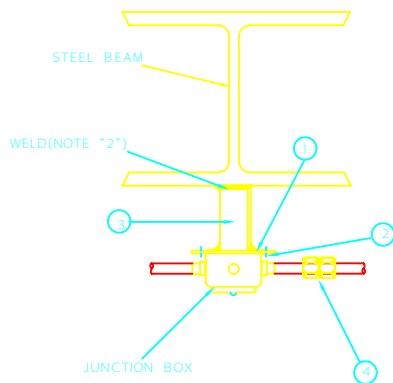
NO REVISION PERMITTED UNLESS APPROVED BY STANDARD ORGANIZATION

REFERENCE DRAWING  
LIGHTING INSTALLATION DETAILS  
"CATEGORY 300"  
JUNCTION BOX INSTALLATION

DATE	DRAWING No.	SHEET	REV.
	IPS - D - EL - 320	1	2

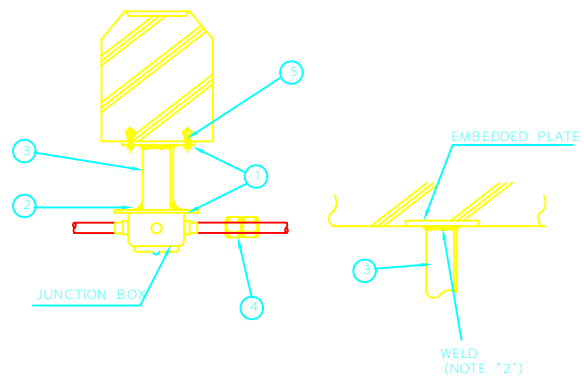
TYPE "E"

MOUNTED ON  
STEEL BEAM



TYPE "F"

MOUNTED ON  
CONCRETE



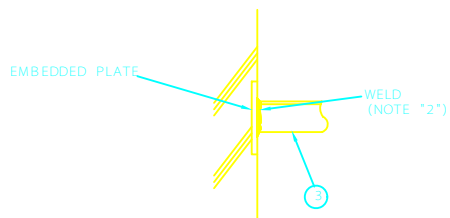
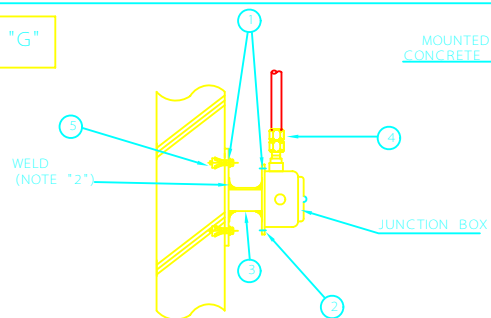
NOTES

- 1- FOR JUNCTION BOX LOCATION, TYPE, etc. SEE RELEVANT LIGHTING,LAYOUT DRAWINGS.
- 2- TO BE WELDED TO STEEL STRUCTURE AT FIELD OR BOLTED WITH MASONRY ANCHOR.
- 3- ALL DIMENSIONS ARE IN MILLIMETER

No.	DESCRIPTION	QTY.
TYPE "E"		
1	MOUNTING PLATE	
2	BOLT AND NUT WITH 1-SPRING WASHER AND 1-FLAT WASHER FOR JUNCTION BOX	
3	STEEL ANGLE(L-50x50x5)	
4	UNION COUPLING	
5	MASONRY ANCHOR	

TYPE "G"

MOUNTED ON  
CONCRETE COLUMN



REV	DESCRIPTION	DATE
C		
B		
A		

IRANIAN PETROLEUM STANDARDS   
NO REVISION PERMITTED UNLESS APPROVED BY STANDARD ORGANIZATION

REFERENCE DRAWING  
LIGHTING INSTALLATION DETAILS  
"CATEGORY 300"  
JUNCTION BOX INSTALLATION

DATE	DRAWING No.	SHEET	REV.
	IPS - D - EL - 320	2	2