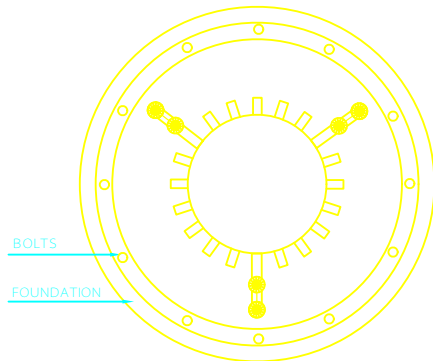
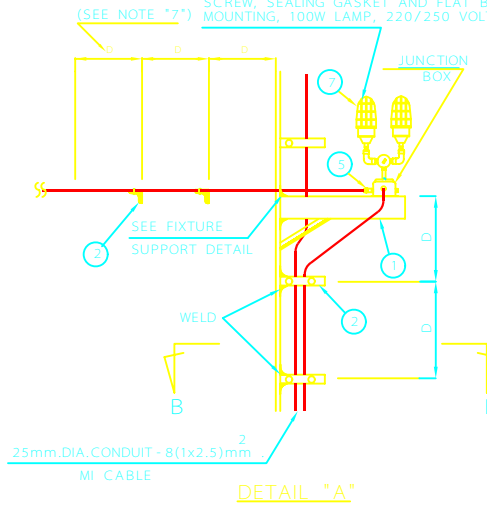


ELEVATION

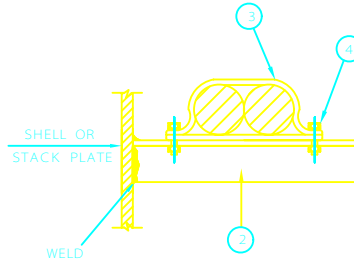


TOP VIEW

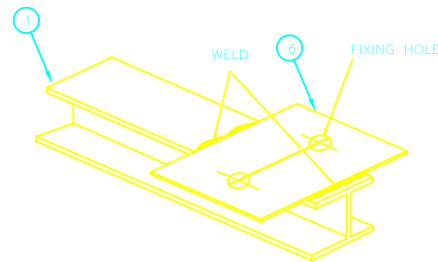
CAST LIGHT METAL HOUSING OMNIDIRECTIONAL, REFLECTION WITH AVIATION RED GLASS DOME, THERMAL AND SHOCK RESISTANT, CABLE ENTRY AT BOTTOM THREADED, SHOCKPROOF PORCELAIN LAMP HOLDER COMPLETE WITH EARTHING, SCREW, SEALING GASKET AND FLAT BAR FOR MOUNTING, 100W LAMP, 220/250 VOLT.



DETAIL "A"



SECTION "B-B"



FIXTURE SUPPORT DETAIL

NOTES

- 1- ALL DIMENSIONS ARE IN MILLIMETERS.
- 2- FOR TYPE OF LIGHTING FIXTURE, MOUNTING ELEVATION, etc. SEE RELEVANT LIGHTING LAYOUT DRAWINGS.
- 3- STACKS LESS THAN 30 METERS HEIGHT FROM THE GROUND LEVEL DO NOT REQUIRE AIRCRAFT WARNING LIGHTS.
- 4- STACKS OF APPROXIMATE HEIGHT OF 30 METERS FROM THE GROUND LEVEL SHOULD BE FITTED WITH THREE WARNING LIGHTS SPACED AT 120° AROUND THE STACK DIRECTED UPWARDS, AND LOCATED SO THAT THE LIGHTS CAN BE SEEN FROM ALL DIRECTIONS. THESE LIGHTS SHALL BE LOCATED BETWEEN 1.5 METERS, AND 3 METERS BELOW TOP OF THE STACK, AND SHALL BE ACCESSIBLE FROM EITHER THE TOP LANDING PLATFORM, LADDER, OR FROM A PAINTER TROLLEY, AS APPLICABLE.
- 5- ALL THE STACKS HIGHER THAN 30 METERS FROM THE GROUND LEVEL SHALL HAVE TWO SETS OF AIRCRAFT WARNING LIGHTS. THE ARRANGMENT OF THE LIGHTS SHALL BE AS FOLLOWS:
 - a- ONE SET OF THREE WARNING LIGHTS SHALL BE INSTALLED AROUND EACH STACK AT A HEIGHT OF 30m FROM THE GROUND LEVEL AND SHALL BE SEEN FROM ALL DIRECTIONS. THE LIGHTS SHALL BE SPACED AT 120° AROUND THE STACK AND SHALL BE DIRECTED UPWARD.
 - b- IN ADDITION, ANOTHER SET OF THREE SETS OF WARNING LIGHTS SHALL BE INSTALLED AT THE TOP OF EACH STACK, THESE LIGHTS SHALL BE LOCATED BETWEEN 1.5 METERS AND 3 METERS BELOW THE TOP OF THE STACK, SPACED AT 120° AROUND THE STACK AND DIRECTED UPWARDS. THE LIGHTS SHALL BE LOCATED SUCH THAT THEY CAN BE SEEN FROM ALL DIRECTIONS AND SHALL BE ACCESSIBLE FROM EITHER THE TOP LANDING PLATFORM LADDER OR FROM A PAINTER TROLLEY.
 - c- WHERE A LIGHT IS SHIELDED FROM ANY DIRECTION BY AN ADJACENT OBJECT, ADDITIONAL LIGHT(S) SHALL BE PROVIDED ON THE OBJECT IN SUCH A WAY AS TO RETAIN THE GENERAL DEFINITION OF THE OBJECT TO BE LIGHTED.
- 6- IN HAZARDOUS AREA, SPECIAL CONSIDERATION SHALL BE GIVEN TO INSTALLATION OF AIR CRAFT WARNING LIGHT PANEL.
- 7- MAXIMUM SPACING (D) IS 1000mm.

No.	DESCRIPTION	QTY.
①	FIXTURE SUPPORT (INP-100)	1-SET
②	CABLE SUPPORT (L=30x30x3)x200L	
③	FLAT IRON 20mm. WIDTH 5mm. THICK	
④	BOLT & NUT WITH 1-SPRING WASHER AND 2-FLAT WASHERS SIZE:M8 x 60	
⑤	CABLE GLAND FOR MI CABLE	
⑥	MOUNTING PLATE (200x200x5)	

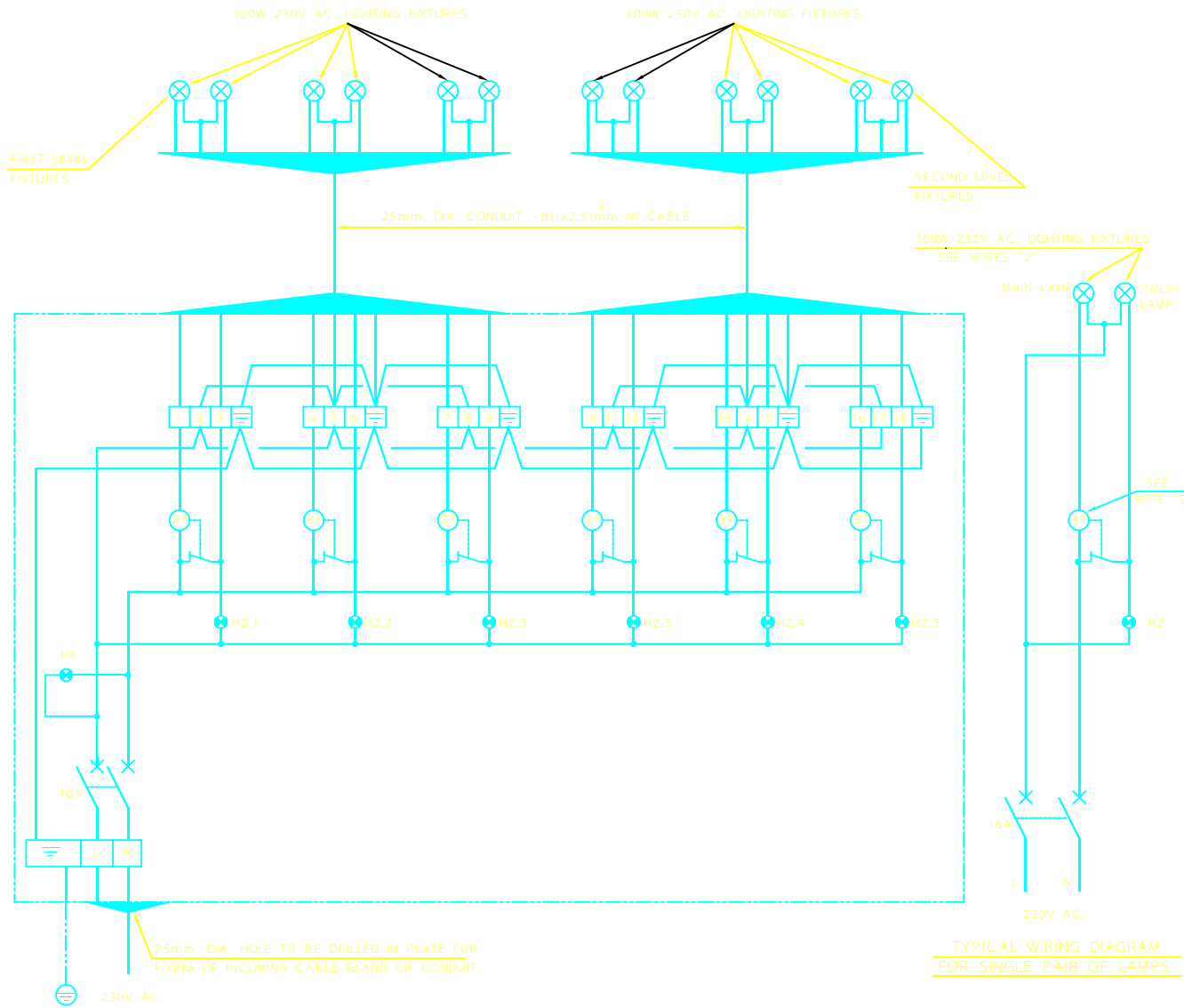
REV	DESCRIPTION	DATE
C		
B		
A		

IRANIAN PETROLEUM STANDARDS 

NO REVISION PERMITTED UNLESS APPROVED BY STANDARD ORGANIZATION

REFERENCE DRAWING
LIGHTING INSTALLATION DETAILS
"CATEGORY 300"
AIRCRAFT WARNING LIGHT
(MOUNTED ON STACK)

DATE	DRAWING No.	SHEET	REV.
	IPS-D-EL-317	1/2	



AIRCRAFT WARNING LIGHT PANEL
ONE LINE DIAGRAM

TYPICAL WIRING DIAGRAM
FOR SINGLE PAIR OF LAMPS

NOTES

- 1- ALL DIMENSIONS ARE IN MILLIMETERS.
- 2- WHEN MAIN LAMP FAILS RELAY 37 TRIPS AND RELATED CONTACT CLOSURES THE STANDBY LAMP CIRCUIT.
- 3- EVERY MONTH A CHECK SHOULD BE MADE TO ENSURE THAT ALL THE WARNING LIGHTS ARE IN OPERATING CONDITION.

LEGEND

- 5W 230V AC. INDICATING LAMP (RED COLOR)
- UNDERCURRENT RELAY
- MINIATURE CIRCUIT BREAKER
- PROTECTIVE GROUND / EARTH
- H1 PROTECTIVE GROUND / EARTH
- H2 PROTECTIVE GROUND / EARTH

REV	DESCRIPTION	DATE

IRANIAN PETROLEUM STANDARDS 
NO REVISION PERMITTED UNLESS APPROVED BY STANDARD ORGANIZATION

REFERENCE DRAWING
LIGHTING INSTALLATION DETAILS
"CATEGORY 300"
AIRCRAFT WARNING LIGHT
(TYPICAL PANEL)

DATE	DRAWING No.	SHEET	REV.
	IPS - D - EL - 317	2	2