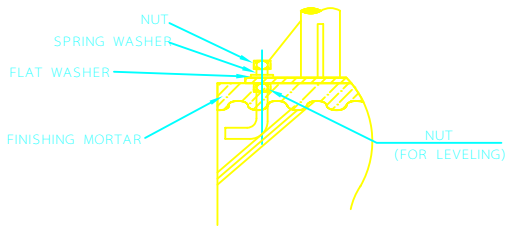
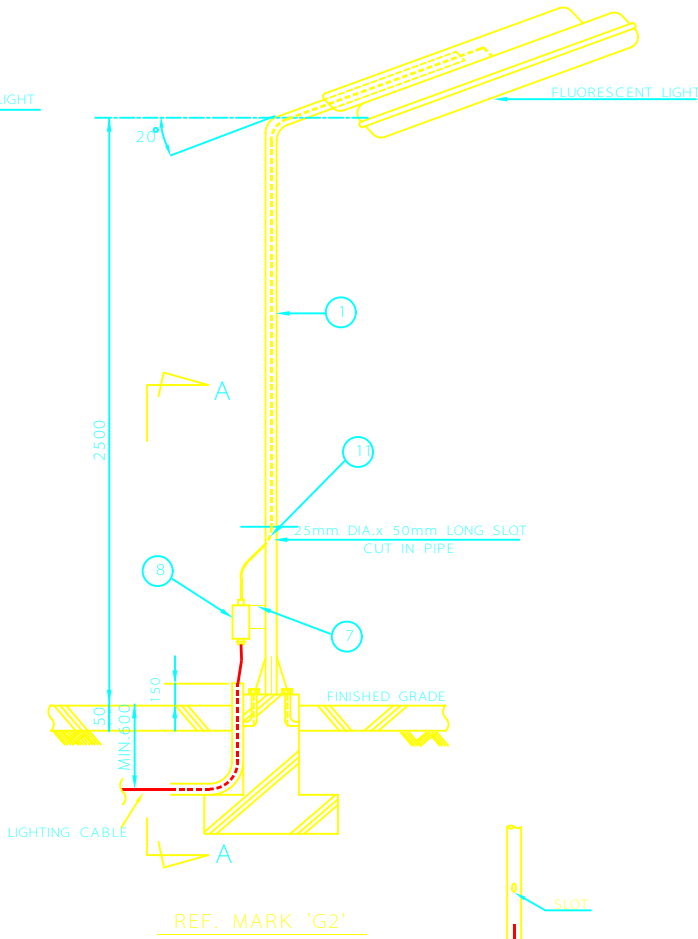


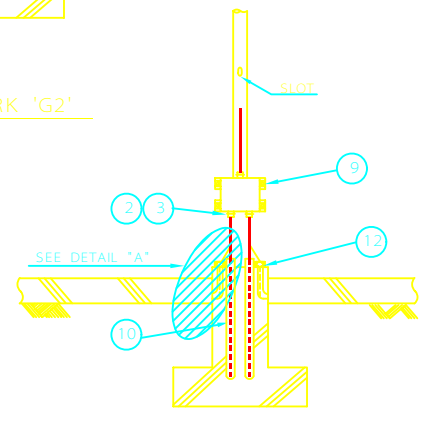
DETAIL "B"



DETAIL "A"



REF. MARK 'G2'



SECTION A-A

NOTES

- 1- ALL DIMENSIONS ARE IN MILLIMETERS.
- 2- FOR TYPE OF LIGHTING FIXTURE, CABLE RUN SEE RELEVANT LIGHTING LAYOUT DRAWINGS.
- 3- FOR CORROSIVE AREAS NON-METALLIC POLES MAY BE USED.
- 4- THE SIZES OF FOUNDATION ON THIS DRAWING IS VALID FOR SOILS WITH BEARING PRESSURES BETWEEN 0.5 AND 2.0 KG/m².

No.	DESCRIPTION	QTY.
1	SUPPORT PIPE (50mm. DIA.)	1-EA
2	CABLE GLAND	
3	PVC SHROUD (OPTION)	
4	MOUNTING PLATE	2-EA
5	U-TYPE BOLT (M6) - 50mm L. FOR LIGHTING FIXTURE	2-EA
6	BOLT & NUT WITH 1-SPRING WASHER AND 2-FLAT WASHERS FOR LIGHTING FIXTURE	4-SETS
7	BOX SUPPORT ([-60x30x6])	2-EA
8	JUNCTION BOX	1-EA
9	BOLT & NUT WITH 1-SPRING WASHER AND 2-FLAT WASHERS FOR JUNCTION BOX	
10	RIGID STEEL CONDUIT	4-SETS
11	FREE-BUSHING FOR HOLE EDGE PROTECTION (NYLON)	2-EA
12	ANCHOR BOLT (M10x200L) WITH 2-NUTS, 1-SPRING WASHER & 1-FLAT WASHER	4-SETS

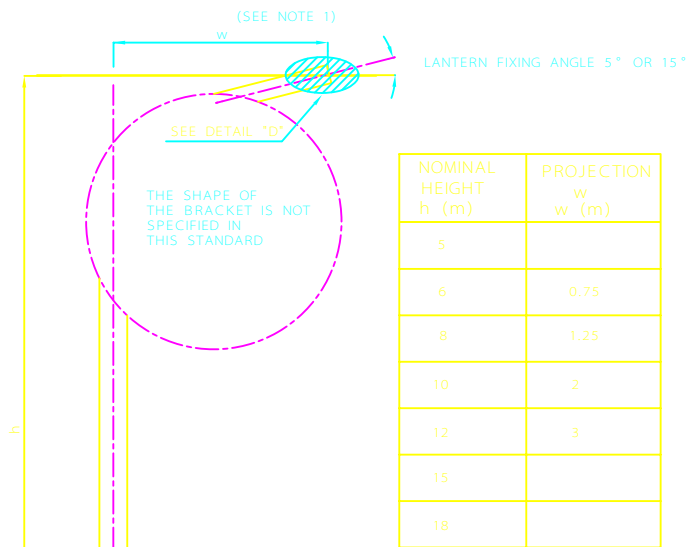
REV	DESCRIPTION	DATE
C		
B		
A		

IRANIAN PETROLEUM STANDARDS 

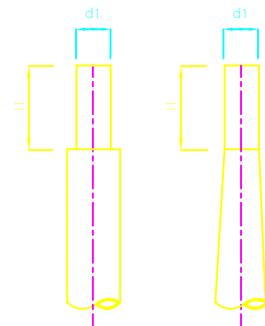
NO REVISION PERMITTED UNLESS APPROVED BY STANDARD ORGANIZATION

REFERENCE DRAWING
LIGHTING INSTALLATION DETAILS
"CATEGORY 300"
FLUORESCENT STREET LIGHTING FIXTURE
(SELF STAND TYPE ON GRADE)

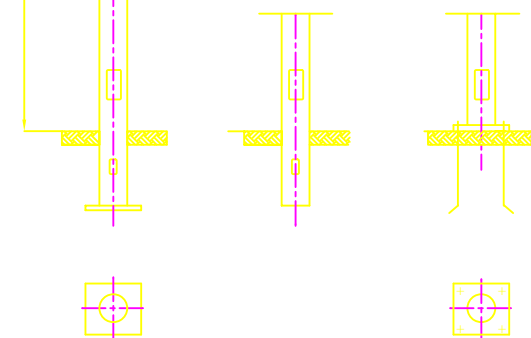
DATE	DRAWING No.	SHEET	REV.
	IPS - D - EL - 308	1	5



NOMINAL HEIGHT h (m)	PROJECTION w (m)
5	
6	0.75
8	1.25
10	2
12	3
15	
18	



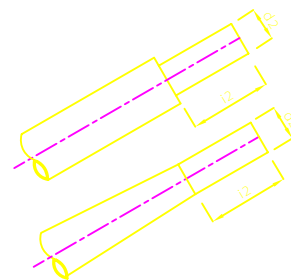
d1	h
60	70
76	130
102	250



TYPE B1

TYPE B2

TYPE B3



d2	h2
42	100
60	100 250

DETAIL "D" (TYPE 2)
FOR SIDE ENTRY

NOTES

- 1- "W" TO BE EQUAL OR LESS THAN h/4
- 2- DIMENSIONS ARE IN MILLIMETERS OR METERS AS APPROPRIATE.

REV	DESCRIPTION	DATE
C		
B		
A		

IRANIAN PETROLEUM STANDARDS 

NO REVISION PERMITTED UNLESS APPROVED BY STANDARD ORGANIZATION

REFERENCE DRAWING
LIGHTING INSTALLATION DETAILS
"CATEGORY 300"
COLUMNS WITH BRACKETS
(RECOMMENDED FOR NON-INDUSTRIAL USE)

DATE	DRAWING No.	SHEET	REV.
	IPS - D - EL - 308	4	5

NOTES

1- DIMENSIONS ARE IN MILLIMETERS OR METERS AS APPROPRIATE.

C		
B		
A		
REV	DESCRIPTION	DATE

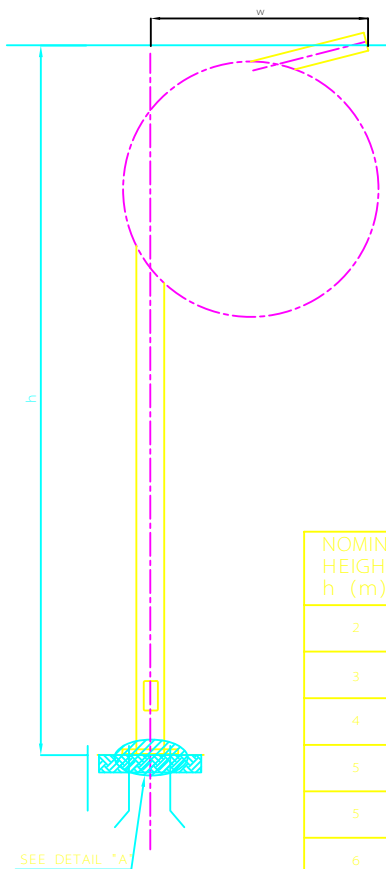
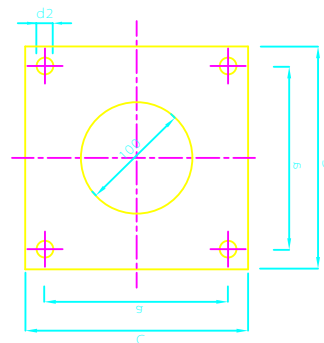
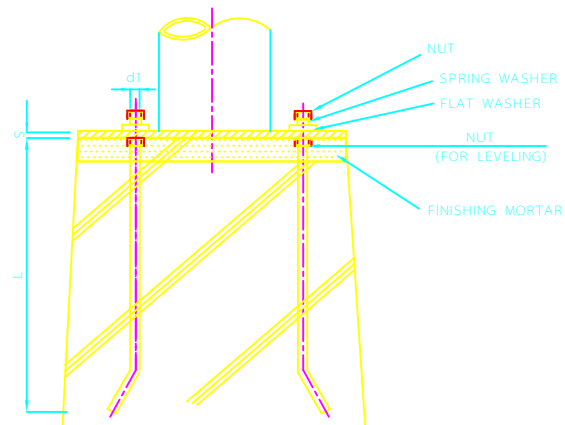
IRANIAN PETROLEUM STANDARDS

NO REVISION PERMITTED UNLESS APPROVED BY STANDARD ORGANIZATION

REFERENCE DRAWING
LIGHTING INSTALLATION DETAILS
"CATEGORY 300"
BASE PLATE
(RECOMMENDED FOR NON-INDUSTRIAL USE)

DATE	DRAWING No.	SHEET	REV.
	IPS - D - EL - 308	3	5

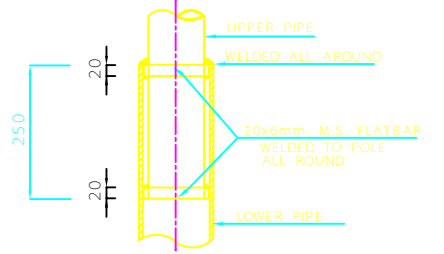
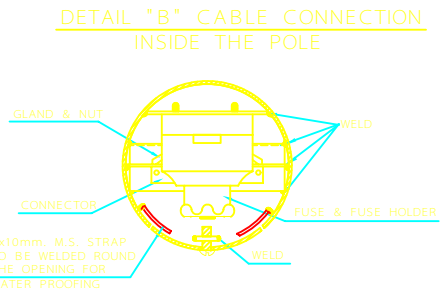
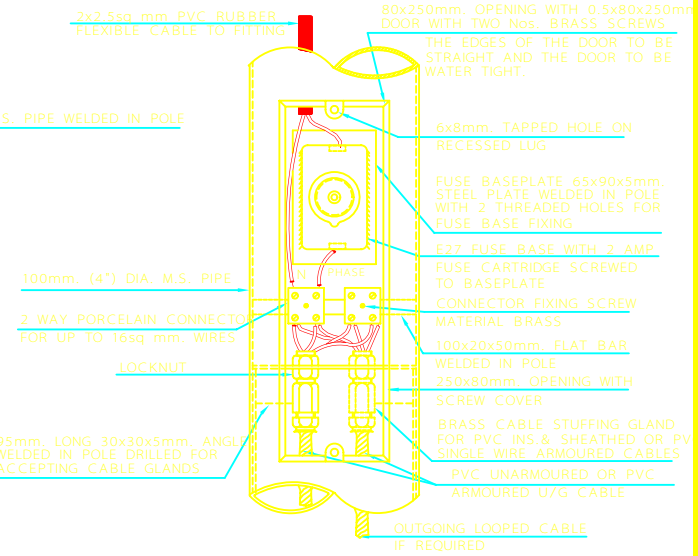
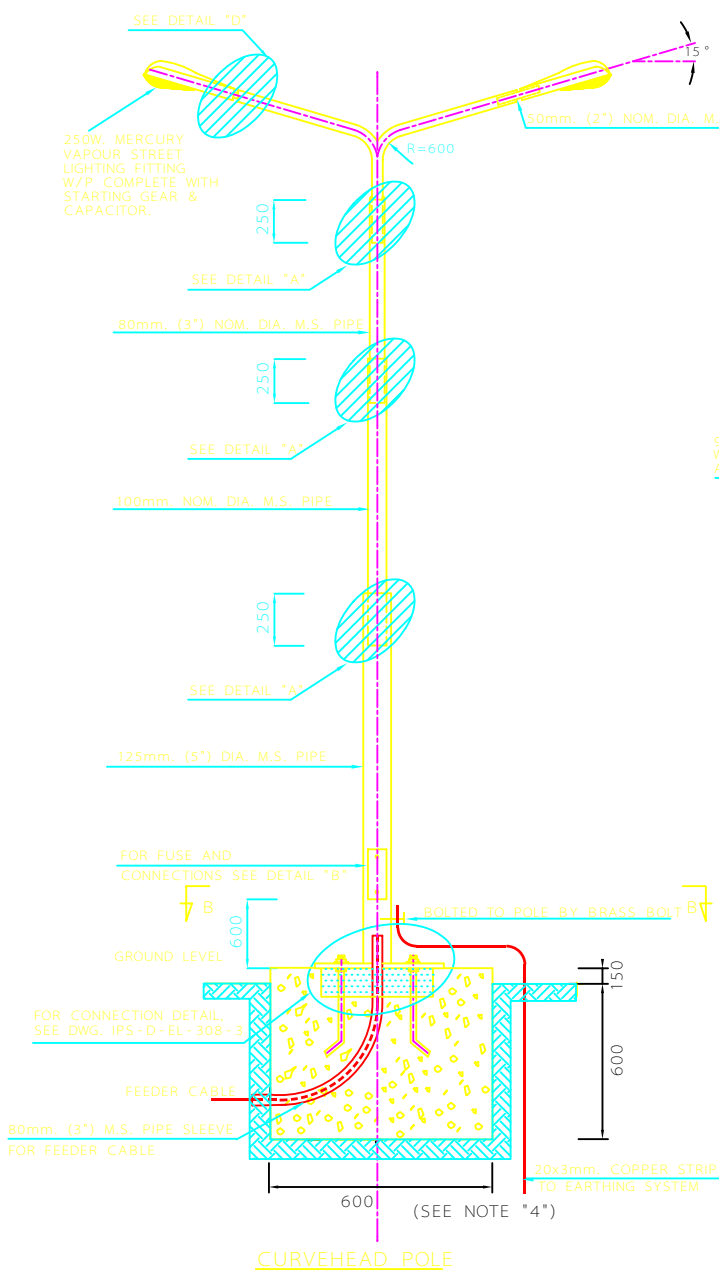
DETAIL "A"



NOMINAL HEIGHT h (m)	PROJECTION w (m)
2	0.75
3	0.85
4	1
5	1
5	1.20
6	1.15
6	1.30

h (m)	c	s _{min.}	a	d1
< 5	260	8	200	M18
< 12	400	10	300	M24
< 20	400 500	20	300 400	M27

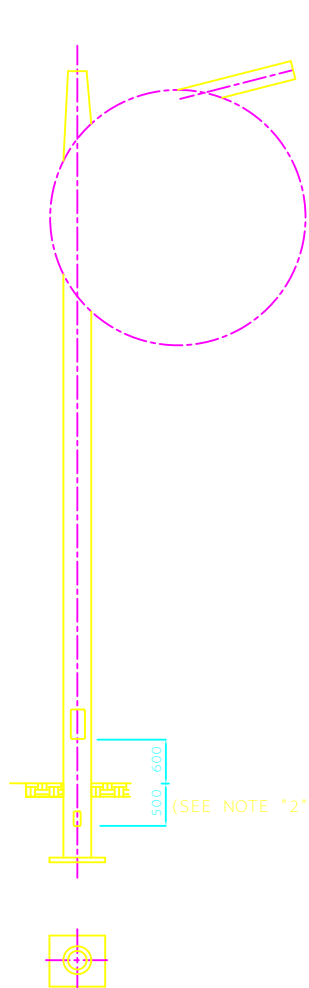
d1	d2	L _{min.}	FOUNDATION SIZE	
			WARM REGIONS	COLD REGIONS
M18	22	400	600x600x650	600x600x1150
M24	30	600	600x600x750	600x600x1150
M27	33	700	600x600x1000	600x600x1000



NOTES

- 1- ALL UNSPECIFIED DIMENSIONS ARE IN MILLIMETERS.
- 2- IF FEEDER CABLE IS 3 PHASE AND NEUTRAL AN ADDITIONAL CONNECTOR SHALL BE FIXED INSIDE THE POLE FOR LOOPING OF 2 PHASES.
- 3- FOR MORE DETAILS SEE:
DWG. IPS-D-EL-308-3
DWG. IPS-D-EL-308-4
DWG. IPS-D-EL-308-5
- 4- THE SIZES OF FOUNDATION ON THIS DRAWING IS VALID FOR SOILS WITH BEARING PRESSURES BETWEEN 0.5 AND 2.0 KG/m².

C			
B			
A			
REV	DESCRIPTION	DATE	
<p>IRANIAN PETROLEUM STANDARDS</p> <p>NO REVISION PERMITTED UNLESS APPROVED BY STANDARD ORGANIZATION</p> <p>REFERENCE DRAWING LIGHTING INSTALLATION DETAILS "CATEGORY 300" STREET LIGHTING FIXTURE (RECOMMENDED FOR NON-INDUSTRIAL USE)</p>			
DATE	DRAWING No.	SHEET	REV.
	IPS-D-EL-308	2/5	



(SEE NOTE "2")

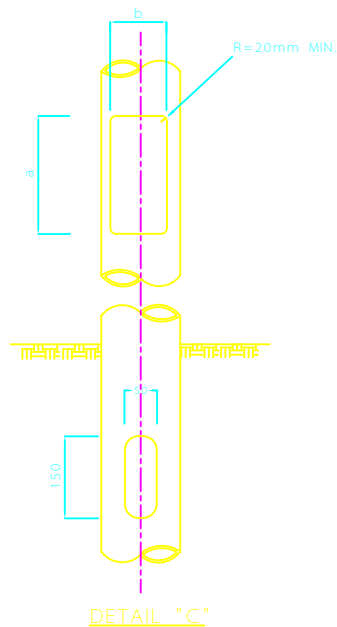
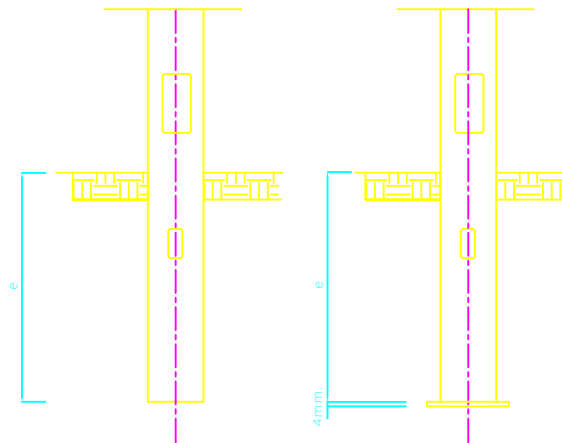
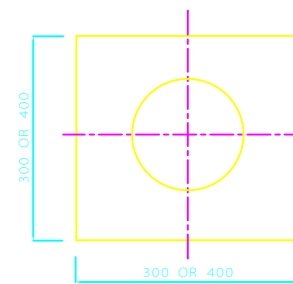


TABLE 1

NOMINAL HEIGHT h (m)	PLANTING DEPTH e (SEE NOTE 2) (mm)		
	<5	600	800
6	800	1000	1200
8	1000	1200	1500
10	1200	1500	1700
12	1500	1700	2000
15	1500	2000	2500
18	1500	2000	-
20	1800	-	-

TABLE 2

a (mm)	b (mm)
200	75
300	85
400	100
500	100
500	120
600	115
600	130



NOTES

- 1- DIMENSIONS ARE IN MILLIMETERS OR METERS AS APPROPRIATE.
- 2- DIMENSION "e" TO BE APPROXIMATELY 600mm BUT IN NO CASE IT SHALL BE LESS THAN 300mm. NO MAXIMUM IS SPECIFIED.
- 3- THE DOOR OPENING SHALL BE POSITIONED PARALLEL TO THE BRACKET ON THE SIDE AWAY FROM THE DIRECTION OF TRAFFIC.
- 4- THE PLANTING DEPTH "e" SHALL BE SELECTED FROM THE VALUES GIVEN IN THE TABLE 1.

C		
B		
A		

REV	DESCRIPTION	DATE
-----	-------------	------

IRANIAN PETROLEUM STANDARDS 
 NO REVISION PERMITTED UNLESS APPROVED BY STANDARD ORGANIZATION

REFERENCE DRAWING
 LIGHTING INSTALLATION DETAILS
 "CATEGORY 300"
 DOOR OPENING AND CABLE ENTRY SLOTS
 (RECOMMENDED FOR NON-INDUSTRIAL USE)

DATE	DRAWING No.	SHEET	REV.
	IPS - D - EL - 308	5	5