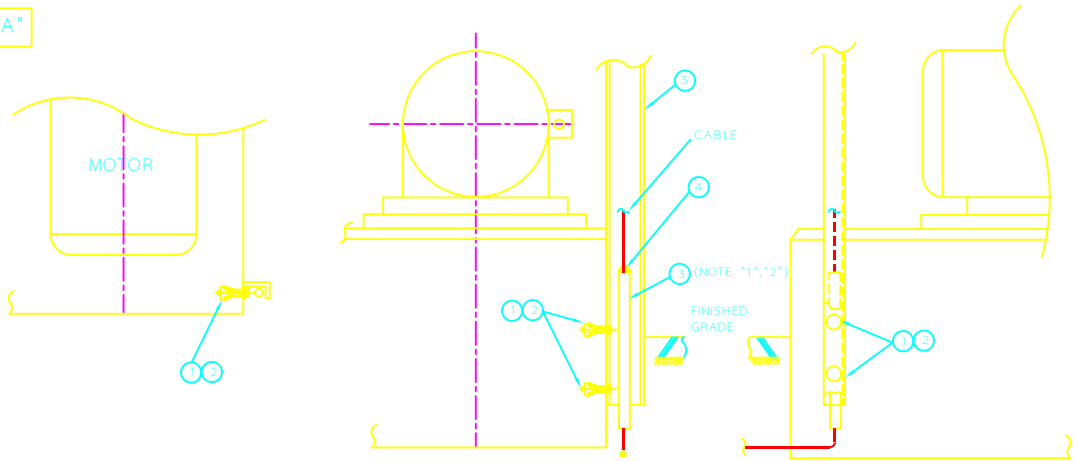
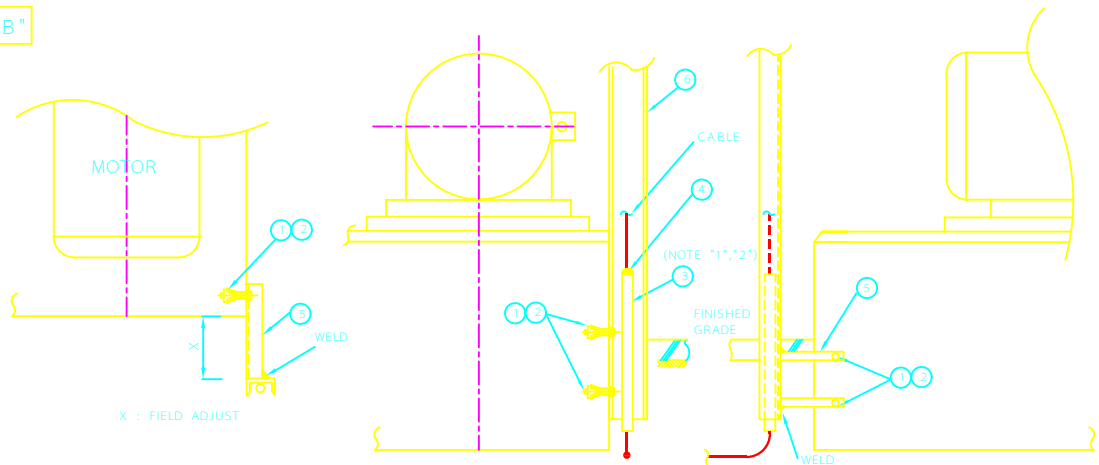


TYPE "A"

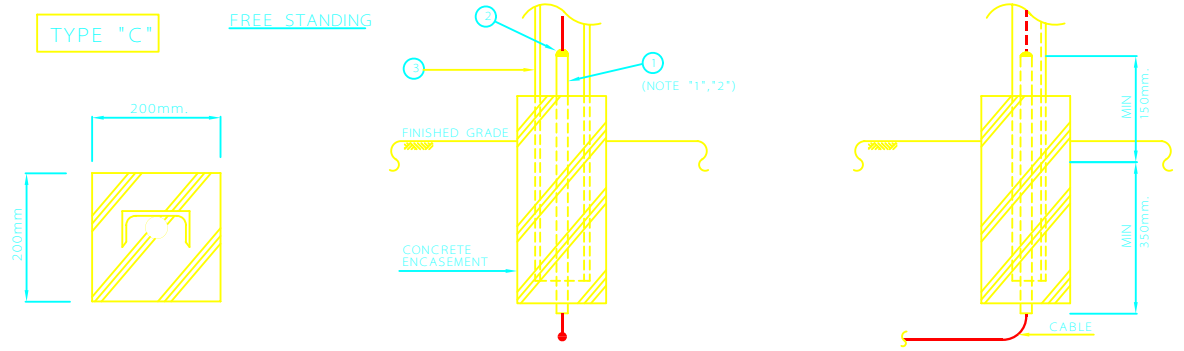


TYPE "B"



TYPE "C"

FREE STANDING



NOTES

- 1- ENDS OF RIGID STEEL CONDUIT TO BE REAMED FREE OF ALL BURRS.
- 2- FOR STUB - UP OF RIGID STEEL CONDUIT AT GRADE. REFER TO DWG. No. EL-205.

No.	DESCRIPTION	QTY.
TYPE "A"		
1	MASONRY ANCHOR, WITHOUT STUD (SIZE : M10)	2- EA
2	M10x25L BOLT WITH 1-SPRING & 1-FLAT WASHER FOR MASONRY ANCHOR	2- EA
3	RIGID STEEL CONDUIT	1- EA
4	NON HARDENING SEALING COMPOUND	AS REQD.
5	STANCHION((80x45x6L)	1- EA
TYPE "B"		
1	MASONRY ANCHOR, WITHOUT STUD (SIZE : M10)	2- EA
2	M10x25L BOLT WITH 1-SPRING & 1-FLAT WASHER FOR MASONRY ANCHOR	2- EA
3	RIGID STEEL CONDUIT	1- EA
4	NON HARDENING SEALING COMPOUND	AS REQD.
5	SUPPORT (L 50x50x5t)	2- SETS
6	STANCHION((80x45x6L)	1- EA
TYPE "C"		
1	RIGID STEEL CONDUIT	1- EA
2	NON HARDENING SEALING COMPOUND	AS REQD.
3	STANCHION((80x45x6L)	1- EA

REV	DESCRIPTION	DATE

IRANIAN PETROLEUM STANDARDS

NO REVISION PERMITTED UNLESS APPROVED BY STANDARD ORGANIZATION

REFERENCE DRAWING
POWER INSTALLATION DETAILS
"CATEGORY 200"

INSTALLATION OF STANCHION FOR CONTROL STATION

DATE	DRAWING No.	SHEET	REV.
	IPS - D - EL - 217	1	1