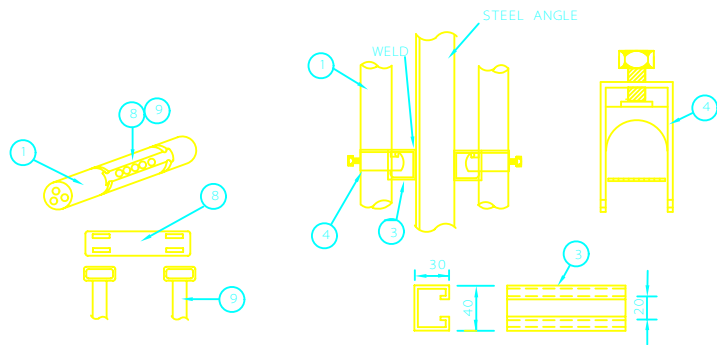
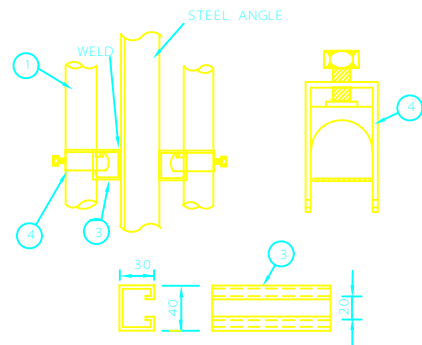


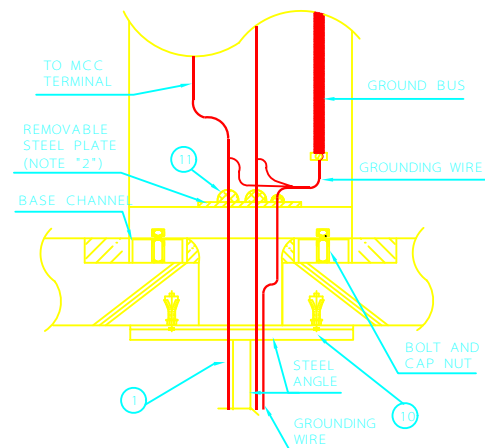
CABLE ROOM ELEVATION



DETAIL "C"



DETAIL "B"



DETAIL "A"

## NOTES

- 1- ALL DIMENSIONS ARE IN MILLIMETERS.
- 2- GLAND PLATE OR PANEL BOTTOM PLATE SHALL BE MADE OF NON-MAGNETIC MATERIAL WHERE SINGLE CORE CABLE IS THROUGH.
- 3- THE LEAD COVER AND WIRE ARMOUR OF CABLES SHALL BE CONNECTED TO THE PERMANENT GROUNDING SYSTEM WITH SUITABLE SOLDERLESS PRESSURE TYPE CONDUCTORS.
- 4- ALL CABLES IN THE VAULT SHALL BE SUPPORTED HORIZONTALLY AND/OR VERTICALLY.

No.	DESCRIPTION	QTY.
1	POWER & CONTROL CABLE	
2	CABLE TRAY	
3	UNISTRUT CHANNEL	
4	UNISTRUT CLAMP	
5	TRAY SUPPORT	
6	CABLE SUPPORT (L-50x50x6)	
7	STEEL PLATE 4.5 thk.	
8	CABLE ID NUMBER TAG PLATE	
9	FIXING TIE	
10	MASONRY ANCHOR	
11	NON-HARDENING SEALING COMPOUND	
12	TERMINATION KIT	
13	CABLE GLAND	
14	GLAND PLATE	

REV	DESCRIPTION	DATE
C		
B		
A		

IRANIAN PETROLEUM STANDARDS 

NO REVISION PERMITTED UNLESS APPROVED BY STANDARD ORGANIZATION

REFERENCE DRAWING  
POWER INSTALLATION DETAILS  
"CATEGORY 200"  
CABLE ROOM

DATE	DRAWING No.	SHEET	REV.
	IPS - D - EL - 215	1	1