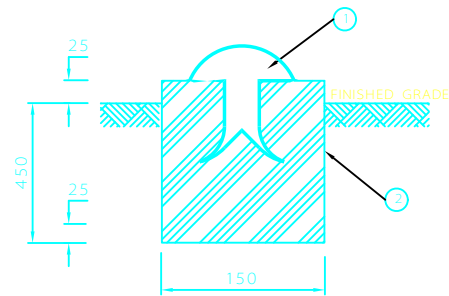


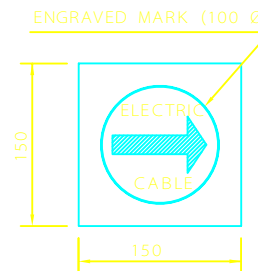
CABLE ROUTE MARKER & LOCATION



TYPE "A" UNPAVED AREA



TYPE "B" PAVED AREA



NOTES

- 1- ALL DIMENSIONS ARE IN MILLIMETERS.
- 2- TYPE "A" MARKER SHALL BE LOCATED ALONG THE CENTER LINE OF TRENCH. TYPE "B" MARKER SHALL BE LOCATED ALONG BOTH EDGES OF EACH TRENCH.
- 3- CABLE ROUTE MARKERS SHALL BE INSTALLED AT THE FOLLOWING LOCATIONS:
 - a) AT INTERVALS NOT EXCEEDING 20 METERS FOR STRAIGHT RUNS.
 - b) AT EVERY CHANGE OF DIRECTION.
 - c) AT ROAD OR PIPE CROSSINGS.
 - d) SPLICING POINTS.

No.	DESCRIPTION	QTY.
①	CABLE ROUTE MARKER 100 Ø, CAST IRON	AS REQD.
②	ROUTE MARKER POST	AS REQD.

REV	DESCRIPTION	DATE

IRANIAN PETROLEUM STANDARDS 
 NO REVISION PERMITTED UNLESS APPROVED BY STANDARD ORGANIZATION

REFERENCE DRAWING
 POWER INSTALLATION DETAILS
 "CATEGORY 200"

CABLE ROUTE MARKER & LOCATION

DATE	DRAWING No.	SHEET	REV.
	IPS - D - EL - 208	1	1