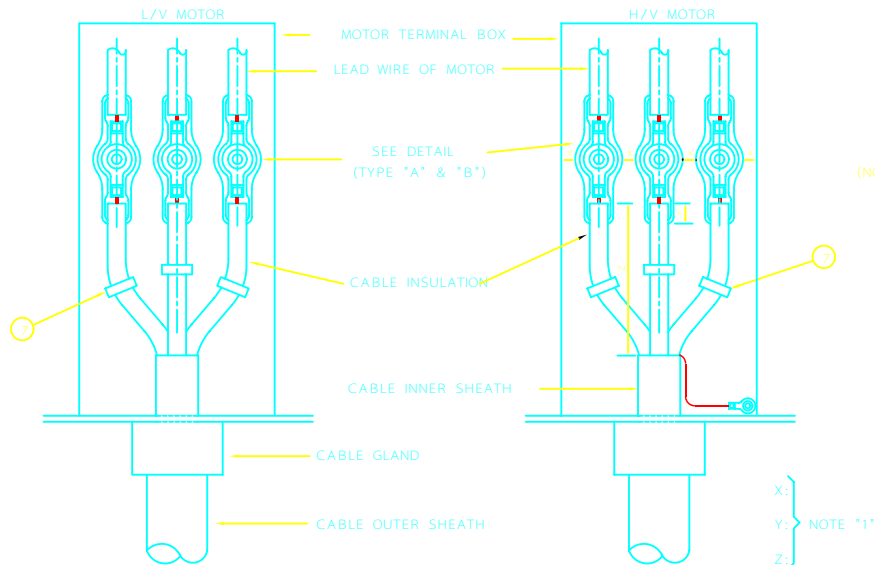
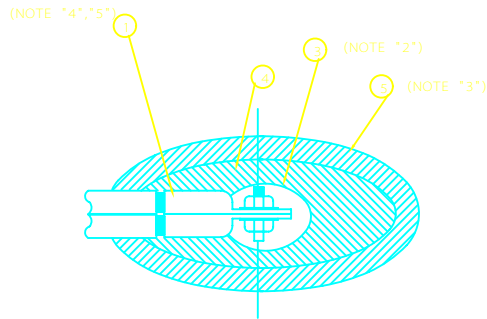


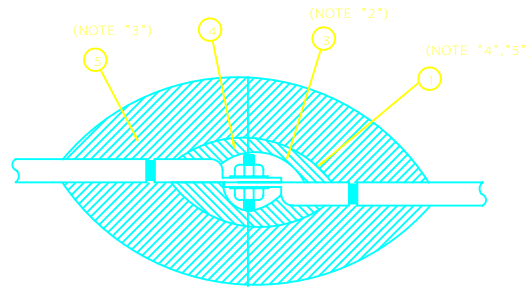
**LOOSE LEADS TYPE**



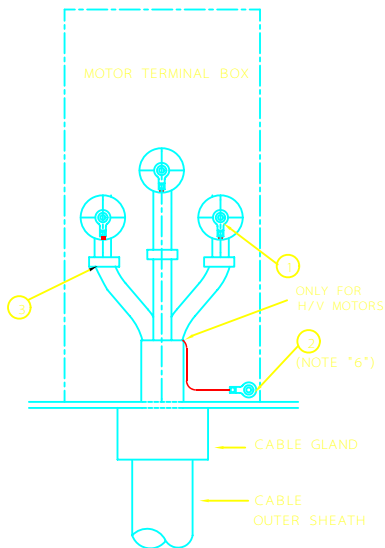
**TYPE "A" (NOTE 5)**



**TYPE "B" (NOTE 5)  
PIG TAIL JOINT**



**TYPE "A" (NOTE 5)  
STRAIGHT JOINT**



**STUD TERMINAL TYPE**

**NOTES**

- 1- APPLICABLE MANUFACTURERS RECOMENDATION OR INSTRUCTION TO BE FOLLOWED FOR CABLE TERMINATION.
- 2- WRAP THE VARNISHED OR SIMILAR NON-ADHESIVE TAPE OVER THE CONNECTED TERMINAL LUG IN ORDER TO PREVENT THE DAMAGE OF INSULATION TAPE FROM THE SHARP EDGE OF BOLT AND NUT, FOR HIGH VOLTAGE MOTOR ONLY.
- 3- WRAP THE INSULATION TAPE WITH THE THICKNESS OF AT LEAST 8mm(H/V CABLE) AND 2mm(L/V CABLE).
- 4- CONNECTION SHALL BE FIRMLY BOLTED.
- 5- BOTH CONNECTION TYPE "A" & "B" CAN BE APPLIED DEPENDING ON THE SPACE IN TERMINAL BOX.
- 6- EARTH CONDUCTOR SHALL BE WRAPPED WITH GREEN COLOR PVC TAPE, OR GREEN COLOR INSULATION WIRE SHALL BE USED.

No.	DESCRIPTION	QTY.
LOOSE LEAD TYPE		
1	TERMINAL LUG	3-EA
2	BOLT AND NUT WITH 1-SPRING & 2-FLAT WASHERS	3-EA
3	VARNISHED TAPE (OR SIMILAR, NON-ADHESIVE)OPTION	
4	ELECTRICAL SELF FUSING RUBBER TAPE(BAL)AS REQD	
5	ELECTRICAL INSULATION TAPE	AS REQD
6	EARTH TERMINAL	1-EA
7	PVC COLOR CODING TYPE (RED,YELLOW,BLUE)	AS REQD
STUD TERMINAL		
1	TERMINAL LUG	3-EA
2	EARTH TERMINAL	1-EA
3	PVC COLOR CODING TYPE (RED,YELLOW,BLUE)	AS REQD

REV	DESCRIPTION	DATE

IRANIAN PETROLEUM STANDARDS

NO REVISION PERMITTED UNLESS APPROVED BY STANDARD ORGANIZATION

REFERENCE DRAWING  
POWER INSTALLATION DETAILS  
"CATEGORY 200"  
**CABLE TERMINATION FOR MOTOR**

DATE	DRAWING No.	SHEET	REV.
	IPS - D - EL - 206	1	1