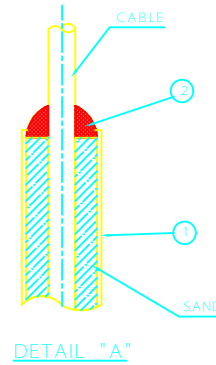
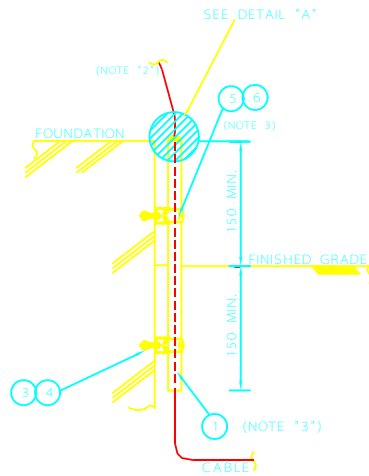
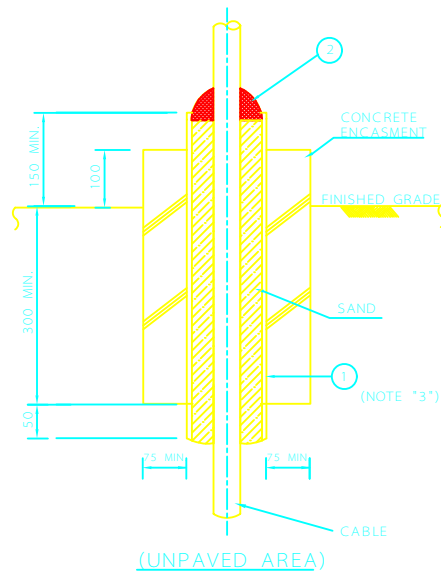
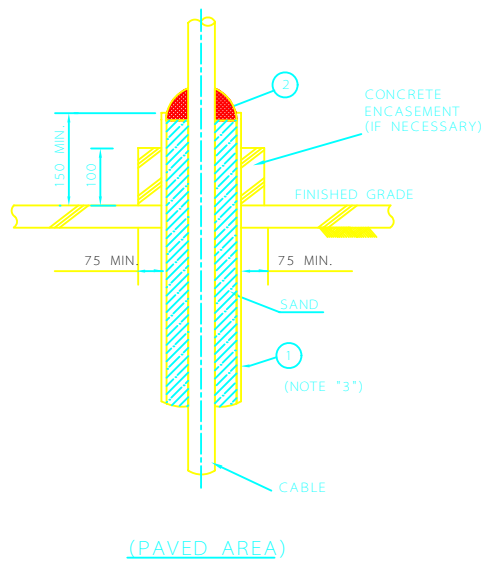


TYPE "A"



TYPE "B"



FREE STANDING STUB-UP CONDUIT

NOTES

- 1- ALL DIMENSIONS ARE IN MILLIMETERS
- 2- END OF RIGID STEEL CONDUIT TO BE REAMED FREE OF ALL BURRS.
- 3- FOR CONDUIT SUPPORT, REFER TO DWG. No. EL-211
- 4- CLEAN SAND SHALL BE FILLED IN THE CONDUIT.

No.	DESCRIPTION	QTY.
1	RIGID STEEL CONDUIT	AS REQD
2	NON HARDENING SEALING COMPOUND	AS REQD
3	MASONRY ANCHOR	AS REQD
4	M8x15L BOLT & NUT WITH 1-SPRING & 2-FLAT WASHERS FOR MASONRY ANCHOR	AS REQD
5	UNISTRUT CHANNEL ([-40x30x10x2.5thk x120])	AS REQD
6	UNISTRUT CLAMP WITH BOLT/NUT	AS REQD

REV	DESCRIPTION	DATE

IRANIAN PETROLEUM STANDARDS   
 NO REVISION PERMITTED UNLESS APPROVED BY STANDARD ORGANIZATION

REFERENCE DRAWING  
 POWER INSTALLATION DETAILS  
 "CATEGORY 200"  
 STUB-UP CONDUIT PIPE

DATE	DRAWING No.	SHEET	REV.
	IPS - D - EL - 205	1 / 1	