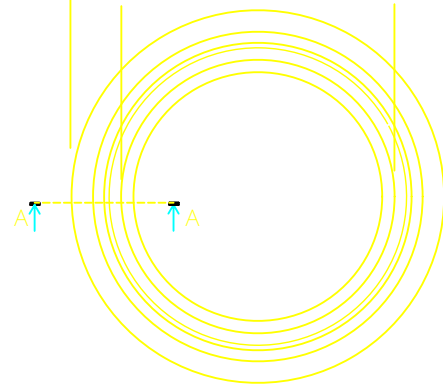
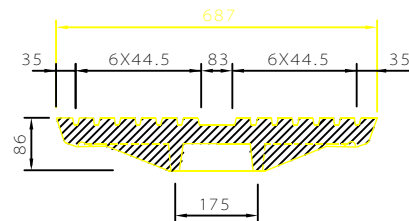


SECTION OF FRAME

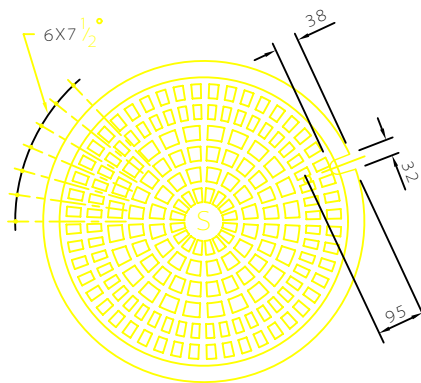


PLAN OF FRAME

WEIGHT=89kg

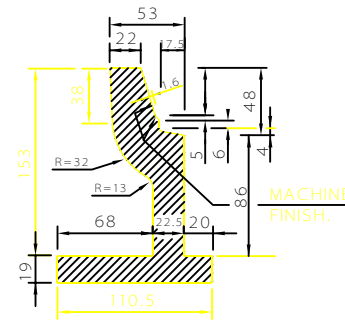


SECTION OF COVER

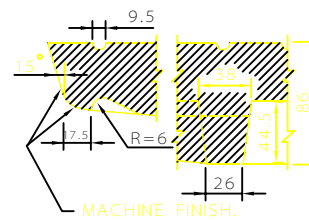


TOP PLAN OF COVER

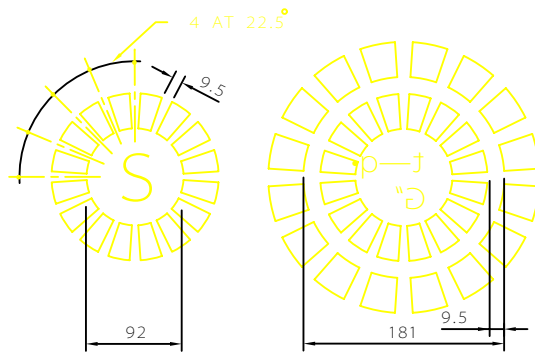
WEIGHT=119kg



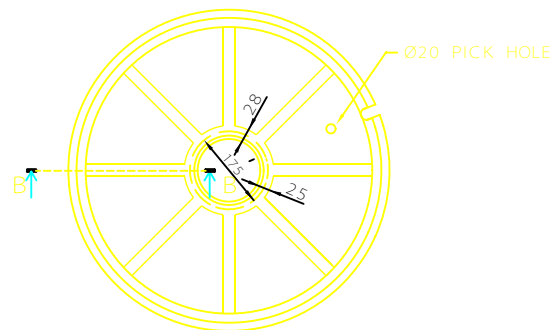
SECTION A - A



SECTION B - B



DETAIL OF LETTERS



BOTTOM PLAN OF COVER

NOT TO SCALE

NOTES

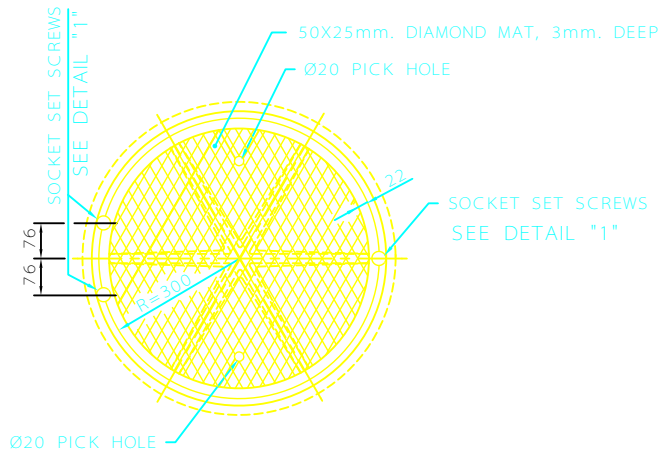
- 1-THE MANHOLE FRAME AND COVER SHALL BE NON-ROCKING AND MADE OF GREY CAST IRON.
- 2-THE COVER SHALL FIT THE FRAME SNUGLY BUT NOT TIGHTLY.
- 3-COVER FOR USE ON SEWER STRUCTURES SHALL BEAR THE LETTER "S" OR "P".
- 4-THE WEIGHT OF FRAME AND COVER SHALL NOT VARY MORE THAN TWO PERCENT FROM THOSE GIVEN HEREON.
- 5-ALL DIMENSIONS ARE IN MILLIMETERS.
- 6-FOR BRICK AND CONCRETE MANHOLES SEE IPS-D-CE-250 & IPS-D-CE-251 RESPECTIVELY.
- 7-THE MANHOLE FRAME AND COVER SHALL BE GREY CAST IRON , WEIGHT 208 kgs.
- 8-ALL PARTS OF MANHOLE FRAME AND COVER EXCEPT MACHINED SURFACES SHALL BE COATED WITH ASPHALTIUM PAINT.
- 9-MINIMUM TENSILE STRENGTH OF TEST PIECES MACHINED FROM SEPARATELY CAST TEST SAMPLES SHALL BE 200 N/mm² IN ACCORDANCE WITH ISO 185.

REV	DESCRIPTION	DATE
C		
B		
A		

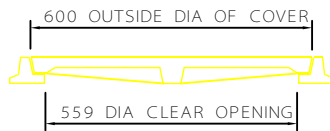
IRANIAN PETROLEUM STANDARDS
NO REVISION PERMITTED UNLESS APPROVED BY STANDARD ORGANIZATION

MANHOLE COVERS & FRAMES
HEAVY GRAY CAST IRON 600 DIA.

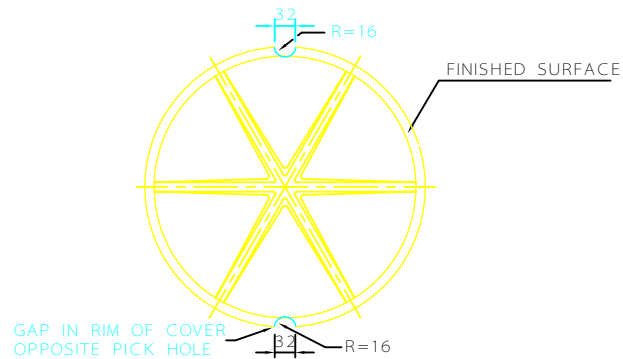
DATE	DRAWING No.	SHEET	REV.
	IPS-D-CE-252	1/2	



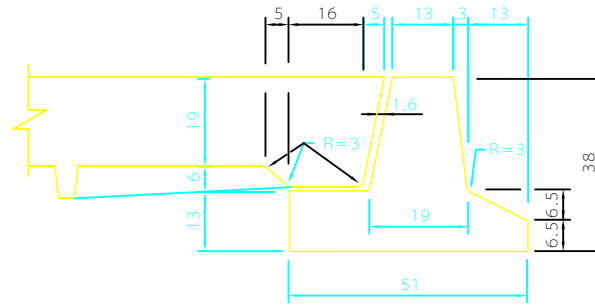
TOP OF MANHOLE FRAME & COVER



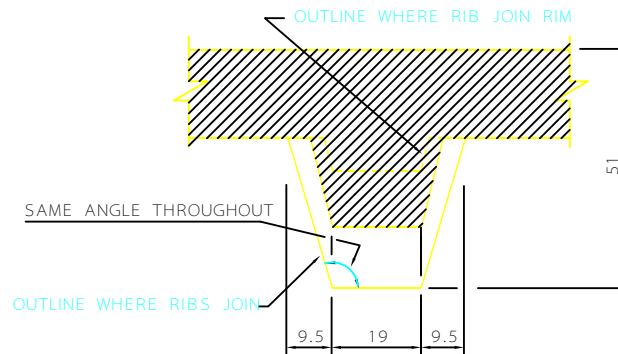
CROSS SECTION THROUGH FRAME & COVER



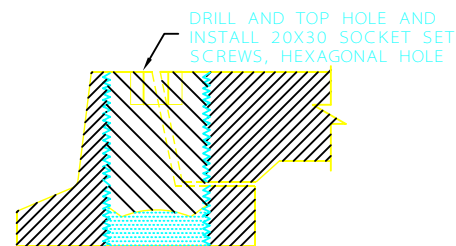
BOTTOM OF MANHOLE COVER



CROSS SECTION THROUGH RIM



CROSS SECTION THROUGH RIB AT MID RADIUS



DETAIL "1"

NOT TO SCALE

NOTES

- 1 - ALL DIMENSIONS ARE IN MILLIMETERS.
- 2 - FRAME AND COVER SHALL BE GREY CAST IRON, WEIGHT 59 kgs, GALVANIZED COMPLETE ASSEMBLY AFTER FABRICATION.

C		
B		
A		
REV	DESCRIPTION	DATE

IRANIAN PETROLEUM STANDARDS 

NO REVISION PERMITTED UNLESS APPROVED BY STANDARD ORGANIZATION

MANHOLE COVERS & FRAMES
LIGHT GRAY CAST IRON 600 DIA.

DATE	DRAWING No.	SHEET	REV.
	IPS - D - CE - 252	2	2