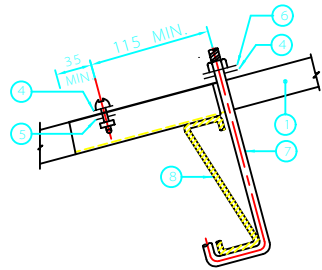
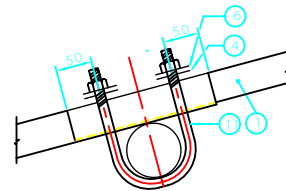


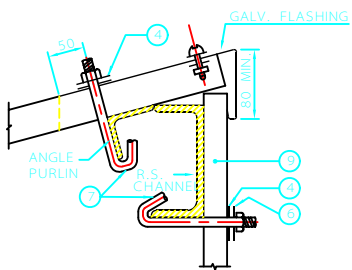
TYPICAL SHEETING CONNECTION TYPE "A"



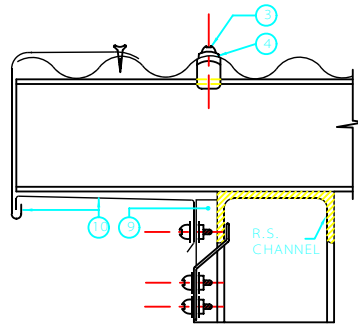
TYPICAL SHEETING CONNECTION TYPE "B"



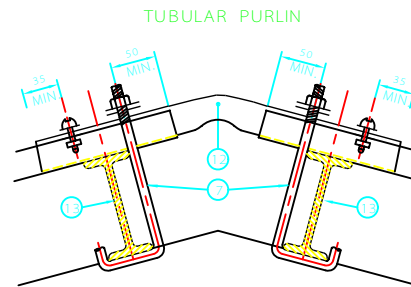
TYPICAL SHEETING CONNECTION TYPE "C"



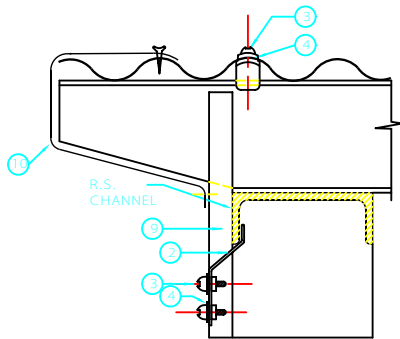
TYPICAL SHEETING CONNECTION TYPE "D"
FOR SAW TOOTH ROOF



TYPICAL GABLE CLOSING TYPE "E"



TYPICAL RIDGE CONNECTION TYPE "F"



TYPICAL GABLE CLOSING TYPE "G"



DETAIL 1
GALV. CLIP

NOTES:

- 1- ALL DIMENSIONS ARE IN MILLIMETERS EXCEPT WHERE OTHERWISE STATED.
- 2- PROVIDE 2 COMPLETE CORRUGATIONS FOR SIDE LAPS AND 200 mm. FOR END LAPS.
- 3- USE GALV. CORR. SHEETS GAUGE 20-22 FOR ROOF & WALLS RESPECTIVELY.
- 4- DETAILS ON THIS DWG. ARE ONLY FOR GALVD. IRON ROOF & WALL SHEETING.
- 5- THIS DRAWING MUST BE READ IN CONJUNCTION WITH IPS-M-CE-105 (FOR MATERIALS).
- 6- LEAD WASHER & WATERPROOFING FELT WASHER SHOULD BE USED WITH HOOK BOLTS.

LEGEND FOR NUMERALS :

- ① CORR. GALV. IRON SHEET
- ② 3 mm.(1/8") THK. GALV. CLIP, (SEE DETAIL 1).
- ③ 6mm. (1/4") GALV. SHEETING BOLT
- ④ LEAD WASHER
- ⑤ M.S. FLAT WASHER
- ⑥ GALV. DIAMOND WASHER
- ⑦ 8 mm. (5/16") DIA. GALV. HOOK BOLT
- ⑧ Z PURLIN
- ⑨ WALL SHEETING
- ⑩ PLAIN GALV. IRON SHEET, GAUGE 22
- ⑪ 8 mm. (5/16") DIA. GALV. U BOLT
- ⑫ GALV. RIDGE WITH SERRATED EDGE (GAUGE 20).
- ⑬ RSJ

LEGEND FOR ABBREVIATIONS :

- RSJ = ROLLED STEEL JOIST(-BEAM)
- CORR. = CORRUGATED
- GALV. = GALVANIZED
- M.S. = MILD STEEL

C		
B		
A		
REV	DESCRIPTION	DATE

IRANIAN PETROLEUM STANDARDS 
NO REVISION PERMITTED UNLESS APPROVED BY STANDARD ORGANIZATION

CORRUGATED M.S. GALVANIZED
SHEETING CONNECTION DETAILS
FOR ROOFS AND WALLS

DATE	DRAWING No.	SHEET	REV.
	IPS - D - CE - 215	1	1