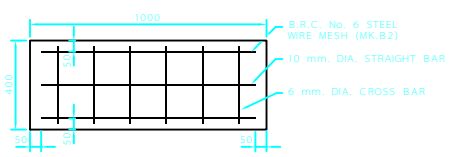
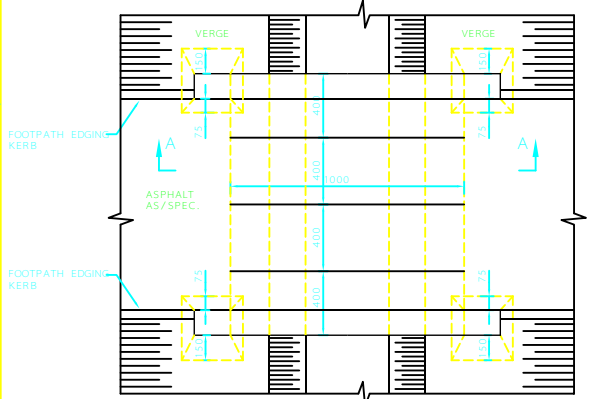


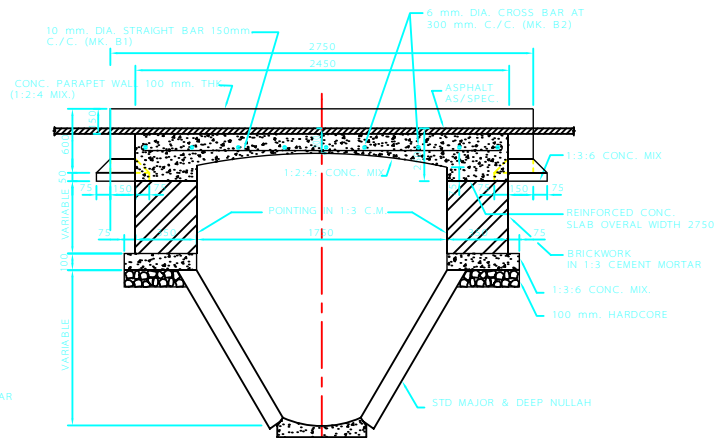
SECTION A - A



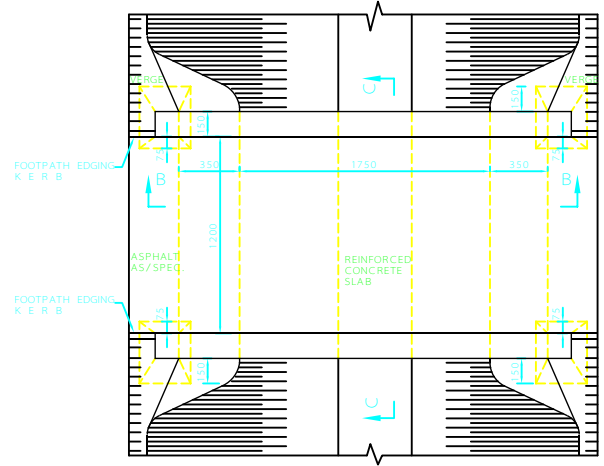
DETAIL OF 1No. CROSSING SLAB 75mm. THK.



PLAN



SECTION B - B

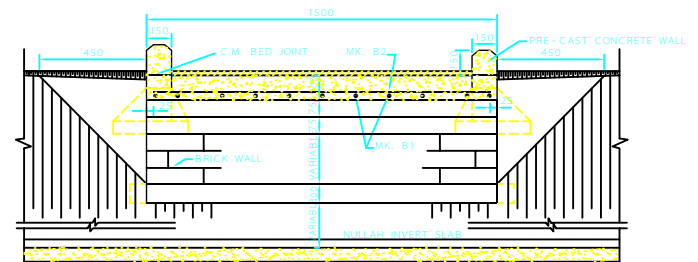


PLAN

FOOTPATH CROSSING OVER STD. MAJOR & DEEP NULLAH

FOOTPATH CROSSING OVER STD. MINOR NULLAH

REINFORCEMENT SCHEDULE						
MARK	DIA. (mm.)	No OF	UNIT LENGTH WITH HOOKS, IF ANY	TOTAL LENGTH (mm.)	DESCRIPTION	REMARKS
B2	10	12	900	10800		FOOTPATH CROSSING OVER MINOR NULLAH
B2	6	24	350	8400		
B1	10	11	2550	28050		FOOTPATH CROSSING OVER MAJOR & DEEP NULLAH
B2	6	9	1450	1300		



SECTION C - C

NOT TO SCALE

NOTES :

- 1- ALL DIMENSIONS ARE IN MILLIMETERS UNLESS OTHERWISE NOTED.
- 2- FIGURED DIMENSIONS ALWAYS TO TAKE PREFERENCE OVER SCALING.
- 3- FOR TYPICAL NULLAH CROSS-SECTIONS SEE DWG. No. IPS-D-CE-176 .
- 4- FOR STD PRE-CAST CONCRETE SLABS SEE DWG. No. IPS-D-CE-175 .

REV	DESCRIPTION	DATE
C		
B		
A		

IRANIAN PETROLEUM STANDARDS
NO REVISION PERMITTED UNLESS APPROVED BY STANDARD ORGANIZATION

FOOTPATH CROSSING OVER NULLAHS			
DATE	DRAWING No.	SHEET	REV.
	IPS-D-CE-177	1/1	