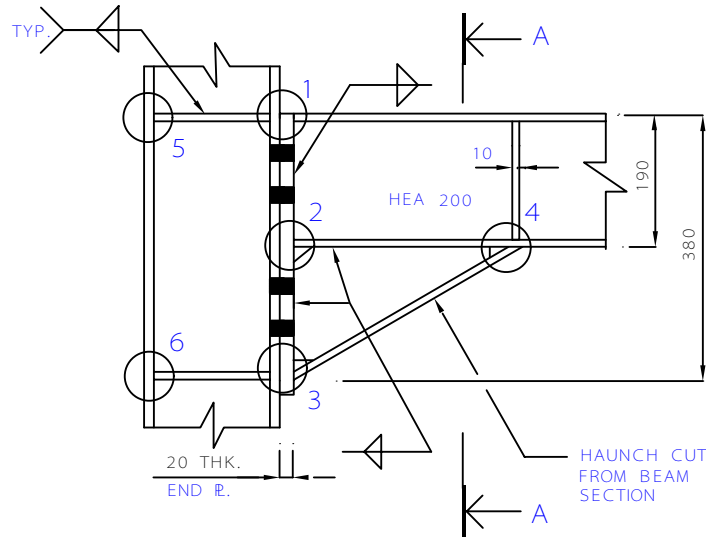
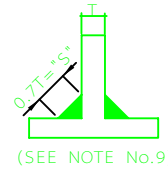
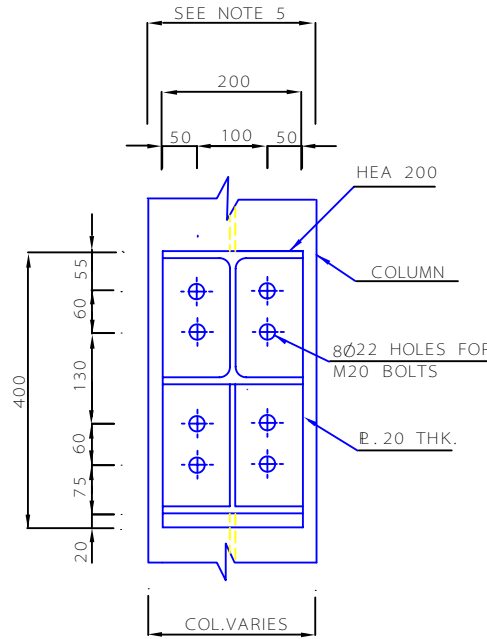


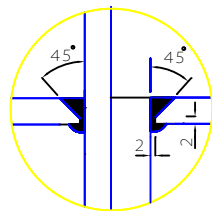
TOP VIEW



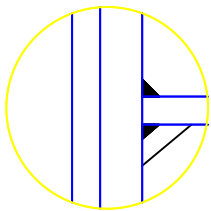
ELEVATION



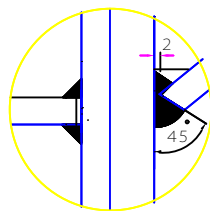
SECTION A - A



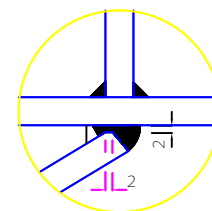
DETAIL1



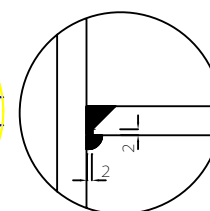
DETAIL2



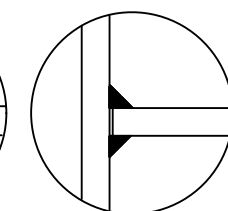
DETAIL3



DETAIL4



DETAIL5



DETAIL6

## NOTES

- 1 - ALL DIMENSIONS ARE IN MILLIMETERS.
- 2 - ALL WELDS SHALL BE DONE AT SHOP.
- 3 - HIGH STRENGTH FRICTION TYPE BOLTS SHALL BE IN ACCORDANCE WITH ASTM A325 TYPE 1 OR EQUIVALENT APPROVED BY AUTHORIZED REPRESENTATIVE OF OWNER.
- 4 - NUTS AND WASHERS SPECIFICATION FOR ASTM A325 BOLT SHALL BE ASTM A563 DH AND ASTM F436 RESPECTIVELY.
- 5 - COLUMN FLANGE WIDTH > BEAM FLANGE WIDTH.
- 6 - BEARING TYPE JOINTS SHALL NOT BE USED.
- 7 - WELDS SHALL BE AS PER AWS D1.1
- 8 - STRUCTURAL MATERIAL SHALL BE DIN ST 37 OR EQUIVALENT.
- 9 - DIMENSION "S" OF NON DIMENSIONED FILLET WELDS SHALL BE AT LEAST EQUAL TO 0.7 TIMES THE MINIMUM THICKNESS OF THE SMALLEST ELEMENTS TO BE CONNECTED.
- 10 - DESIGN PROCEDURES TO BE IN ACCORDANCE WITH AISC MANUAL AND MATERIALS TO BE IN ACCORDANCE WITH DIN STANDARDS.

C		
B		
A		
REV	DESCRIPTION	DATE

IRANIAN PETROLEUM STANDARDS   
 NO REVISION PERMITTED UNLESS APPROVED BY STANDARD ORGANIZATION

STRUCTURAL STEEL CONNECTIONS  
 MOMENT CONNECTION  
 FLUSH END PLATE FOR HEA 200 BEAM

DATE	DRAWING No.	SHEET	REV.
	IPS-D-CE-150	1	1