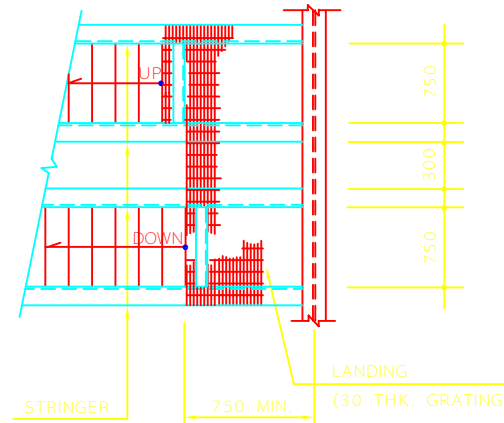
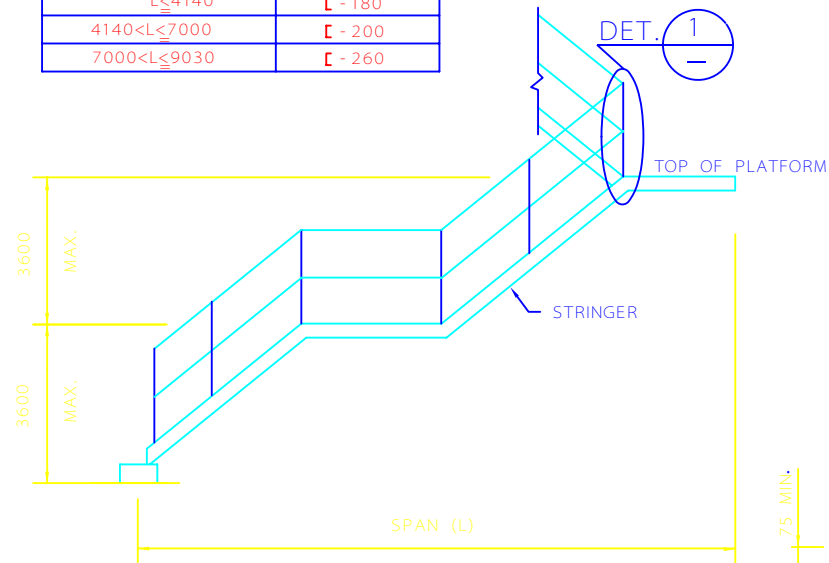
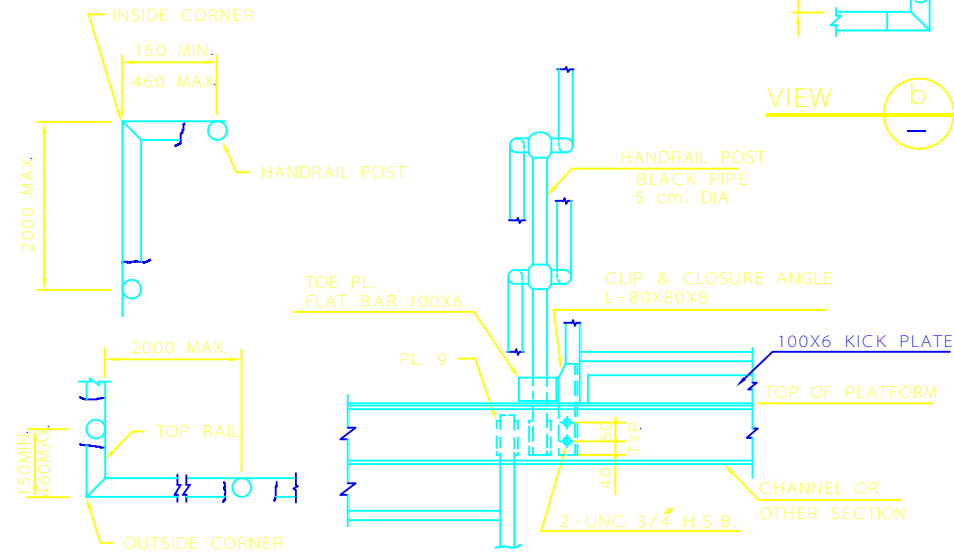


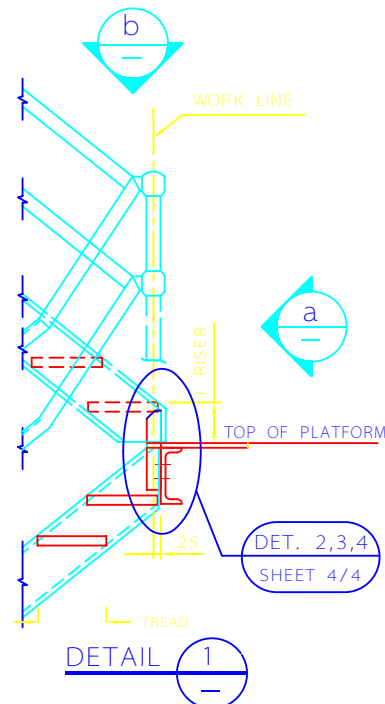
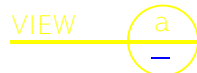
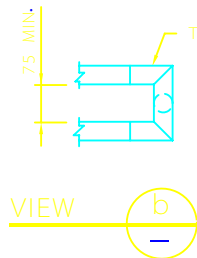
MIN. SIZE OF STRINGER	
SPAN (L)	MEMBER SIZE
$L \leq 4140$	C - 180
$4140 < L \leq 7000$	C - 200
$7000 < L \leq 9030$	C - 260



TYPICAL STAIR PLAN



PLAN
TYPICAL H.R. CORNER



DETAIL 1

NOTES

- 1- DIMENSIONS ARE IN MILLIMETERS EXCEPT SIZE OF BOLTS THAT ARE IN INCH (ASTM STD.).
- 2- BOLTS SHALL BE 5/8" O.S.B. CONFORMING TO ASTM A307 & 3/4" H.S.B. CONFORMING TO ASTM A325.
- 3- GRATING IS HOT DIP GALVANIZED SERRATED TYPE CONFORMING TO ASTM A123.
- 4- STAIRS AND HANDRAILS TO BE FABRICATED IN SECTIONS AT SHOP (PREFERABLY) FOR FIELD ASSEMBLY.
- 5- FOR ANY VARIATIONS OR SPECIAL CONDITIONS SEE INDIVIDUAL ENGINEERING DRAWINGS.
- 6- STAIRS SHALL BE SHIPPED ASSEMBLED UNLESS NOTED OTHERWISE.
- 7- ALL SHARP CORNERS & BURRS SHALL BE REMOVED BEFORE APPLICATION OF PRIMER PAINT.
- 8- FOR RISE & TREAD DIMENSIONS SEE INDIVIDUAL ENGINEERING DRAWINGS.
- 9- MINIMUM HEAD CLEARANCE SHALL BE 2100.
- 10- ABBREVIATIONS :
O.S.B. = ORDINARY STRENGTH BOLT
H.S.B. = HIGH STRENGTH BOLT.

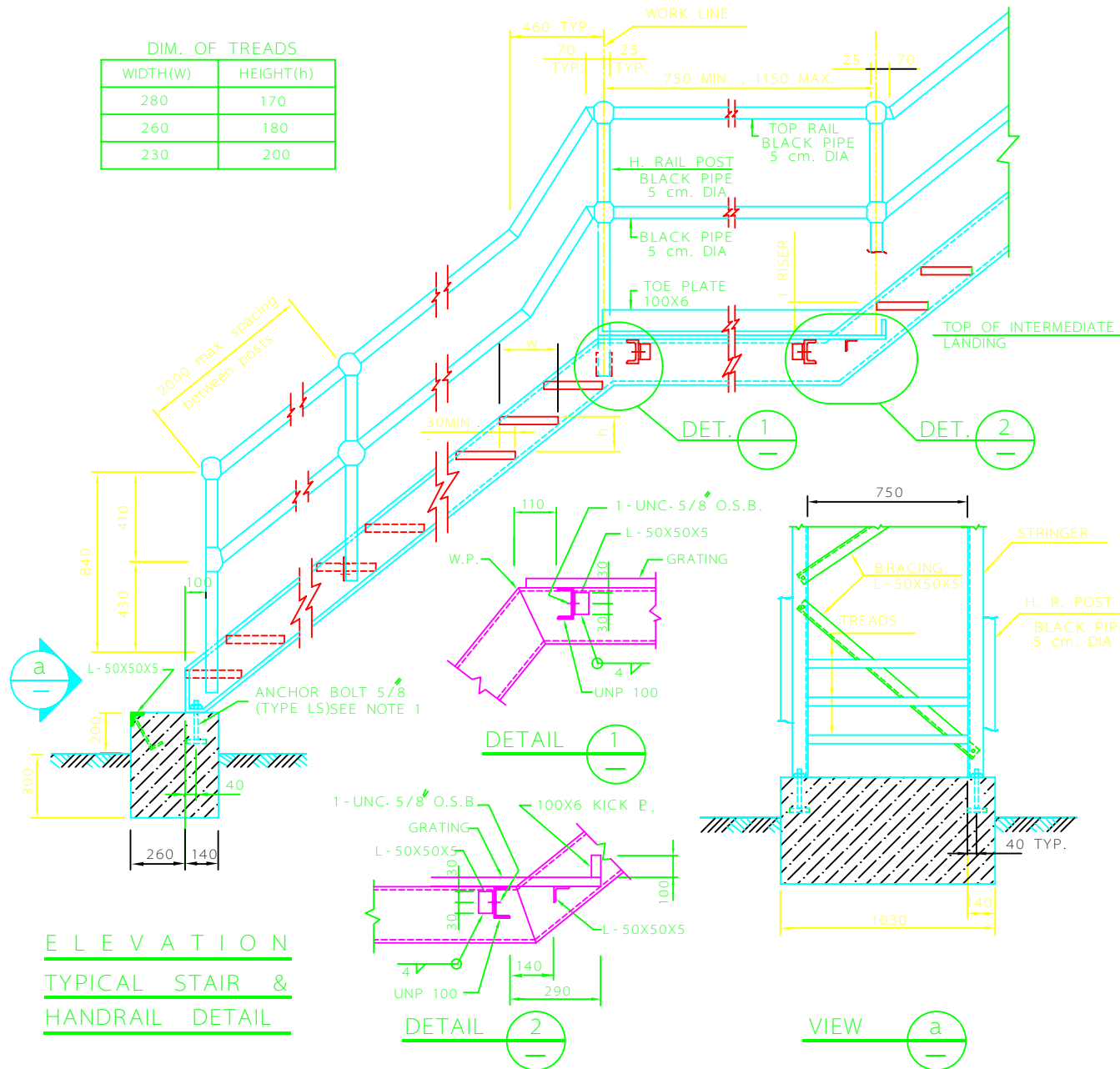
REV	DESCRIPTION	DATE
C		
B		
A		

IRANIAN PETROLEUM STANDARDS
NO REVISION PERMITTED UNLESS APPROVED BY STANDARD ORGANIZATION

INDUSTRIAL STAIR & HANDRAIL
TYPICAL DETAILS ALL PROCESS UNITS


DATE	DRAWING No.	SHEET	REV.
	IPS - D - CE - 141	1/4	

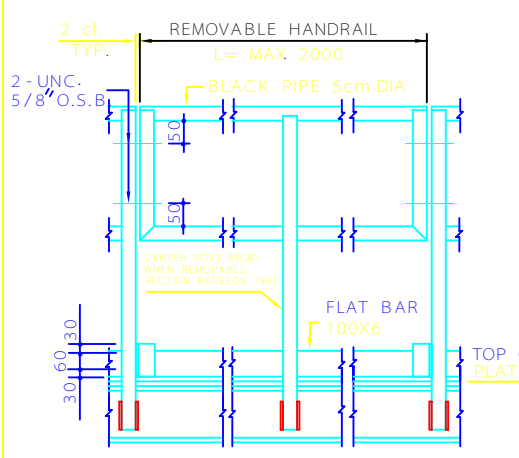
DIM. OF TREADS	
WIDTH(W)	HEIGHT(h)
280	170
260	180
230	200



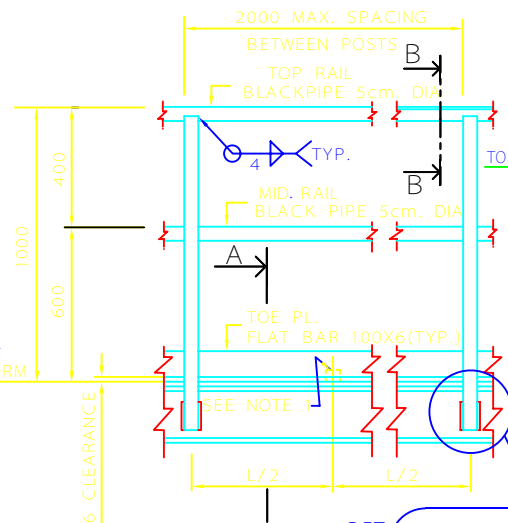
ELEVATION
TYPICAL STAIR &
HANDRAIL DETAIL

NOTES

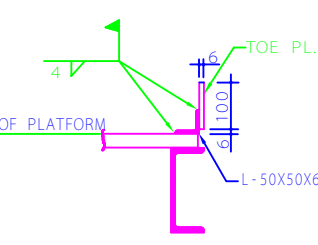
C			
B			
A			
REV	DESCRIPTION	DATE	
<p>IRANIAN PETROLEUM STANDARDS</p>  <p>NO REVISION PERMITTED UNLESS APPROVED BY STANDARD ORGANIZATION</p>			
<p>INDUSTRIAL STAIR & HANDRAIL</p> <p>TYPICAL DETAILS ALL PROCESS UNITS</p>			
DATE	DRAWING No.	SHEET	REV.
	IPS - D - CE - 141	2	4



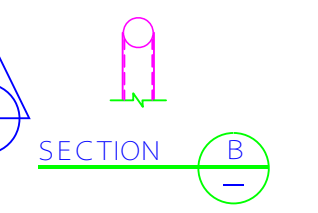
REMOVABLE HANDRAIL DETAIL



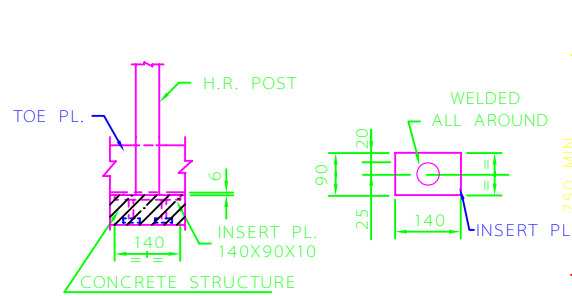
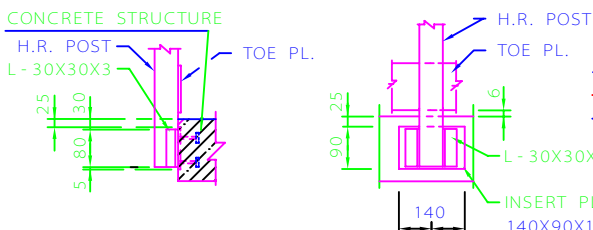
FIXED HANDRAIL DETAIL



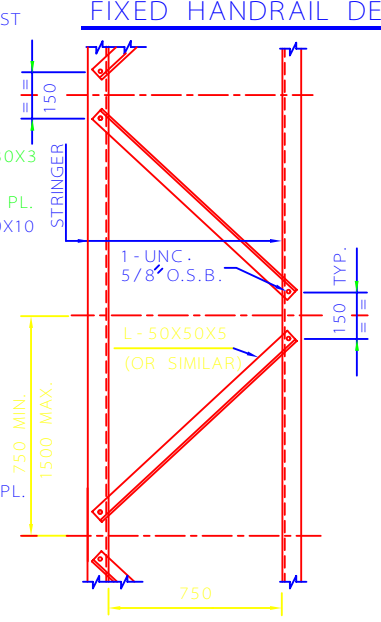
SECTION A



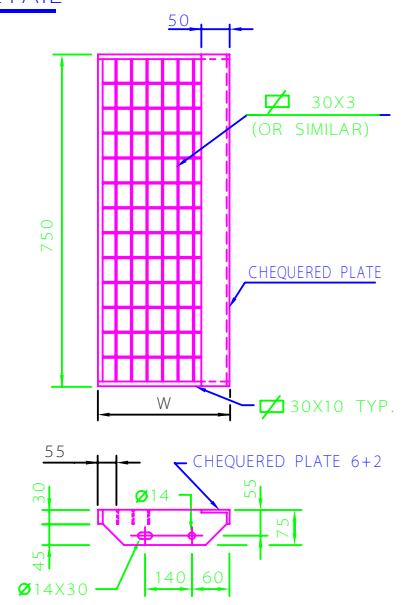
SECTION B



HANDRAIL POST CONNECTION TO CONCRETE MEMBER



BRACING PLAN



TREAD DETAIL

NOTES

1-WHEN POST SPAN EXCEEDS 1000MM. L-50X50X5 SHALL BE INSTALLED AT FIELD FOR TOE PLATE SUPPORT.

REV.	DESCRIPTION	DATE

IRANIAN PETROLEUM STANDARDS
NO REVISION PERMITTED UNLESS APPROVED BY STANDARD ORGANIZATION

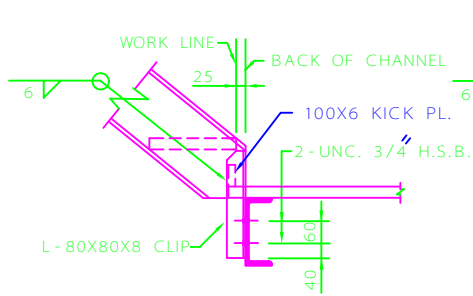
INDUSTRIAL STAIR & HANDRAIL
TYPICAL DETAILS ALL PROCESS UNITS

DATE	DRAWING No.	SHEET	REV.

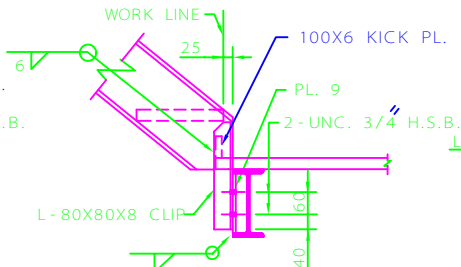
IPS - D - CE - 141

3/4

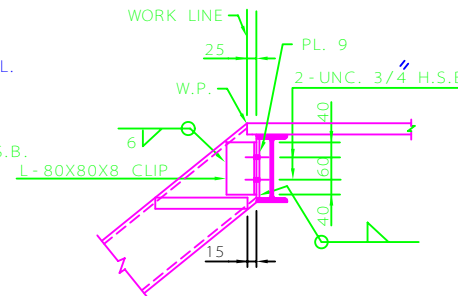
NOTES



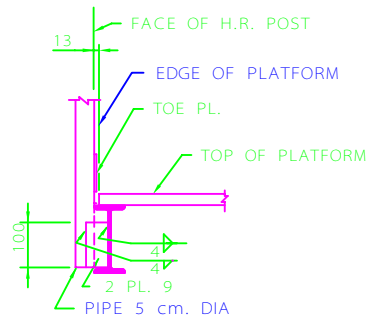
DETAIL 2
SH.1/4



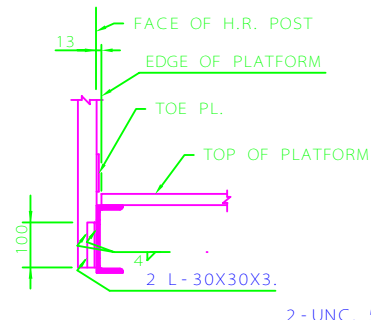
DETAIL 3
SH.1/4



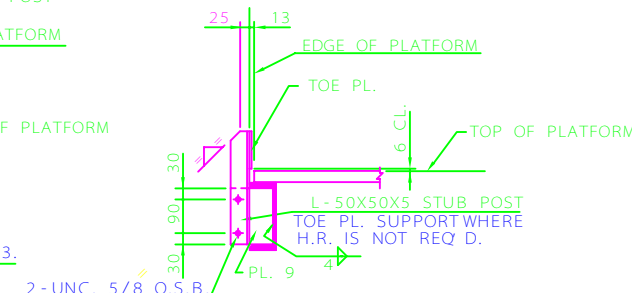
DETAIL 4
SH.1/4



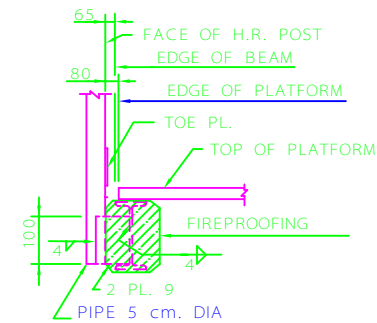
DETAIL 5
SH.3/4



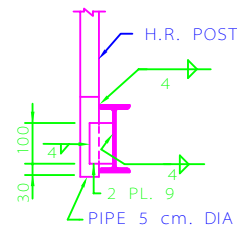
DETAIL 6
SH.3/4



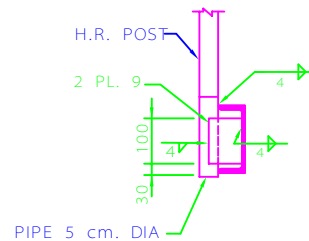
DETAIL 7
SH.3/4



DETAIL 8
SH.3/4



DETAIL 9
SH.3/4



DETAIL 10
SH.3/4

TYPICAL HANDRAIL POST CONNECTIONS

REV.	DESCRIPTION	DATE
C		
B		
A		

IRANIAN PETROLEUM STANDARDS

NO REVISION PERMITTED UNLESS APPROVED BY STANDARD ORGANIZATION

INDUSTRIAL STAIR & HANDRAIL
TYPICAL DETAILS ALL PROCESS UNITS

DATE	DRAWING No.	SHEET	REV.
	IPS - D - CE - 141	4	4